

Recombinant Human EPHA1 Protein, GST-tagged

Cat. No. EPHA1-3375H Lot. No. (See product label)

SPECIFICATION

Product Overview	Human EPHA1 partial ORF (NP_005223, 394 a.a. - 500 a.a.) recombinant protein with GST-tag at N-terminal.
Species	Human
Source	Wheat Germ
Description	This gene belongs to the ephrin receptor subfamily of the protein-tyrosine kinase family. EPH and EPH-related receptors have been implicated in mediating developmental events, particularly in the nervous system. Receptors in the EPH subfamily typically have a single kinase domain and an extracellular region containing a Cys-rich domain and 2 fibronectin type III repeats. The ephrin receptors are divided into 2 groups based on the similarity of their extracellular domain sequences and their affinities for binding ephrin-A and ephrin-B ligands. This gene is expressed in some human cancer cell lines and has been implicated in carcinogenesis. [provided by RefSeq, Jul 2008]
Molecular Mass	37.51 kDa
AA Sequence	PGARGLTTPAVHVNGLEPYANYTFNVEAQNGVSGLGSSGHASTSVSISMGHAEELS GLSLRLVKKEPRQLELTWAGSRPRSPGANLTYELHVLNQDEERYQMVLEPR
Applications	Enzyme-linked Immunoabsorbent Assay Western Blot (Recombinant protein) Antibody Production

 Tel: 1-631-559-9269 1-516-512-3133

 Email: info@creative-biomart.com  Fax: 1-631-938-8127

 45-1 Ramsey Road, Shirley, NY 11967, USA

Protein Array

Notes	Best use within three months from the date of receipt of this protein.
Storage	Store at -80 centigrade. Aliquot to avoid repeated freezing and thawing.
Storage Buffer	50 mM Tris-HCl, 10 mM reduced Glutathione, pH=8.0 in the elution buffer.

GENE INFORMATION

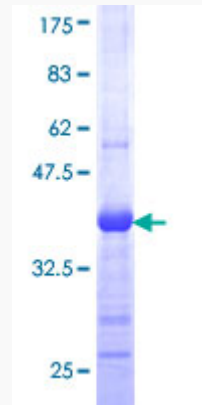
Gene Name	EPHA1 EPH receptor A1 [Homo sapiens]
Official Symbol	EPHA1
Synonyms	EPHA1; EPH receptor A1; EphA1 , EPHT, EPHT1; ephrin type-A receptor 1; EPH; hEpha1; oncogene EPH; eph tyrosine kinase 1; soluble EPHA1 variant 1; soluble EPHA1 variant 2; tyrosine-protein kinase receptor EPH; erythropoietin-producing hepatoma receptor; erythropoietin-producing hepatoma amplified sequence; EPHT; EPHT1; MGC163163;
Gene ID	2041
mRNA Refseq	NM_005232
Protein Refseq	NP_005223
MIM	179610
UniProt ID	P21709

 Tel: 1-631-559-9269 1-516-512-3133

 Email: info@creative-biomart.com  Fax: 1-631-938-8127

 45-1 Ramsey Road, Shirley, NY 11967, USA

**Quality Control
Testing**



12.5% SDS-PAGE Stained with Coomassie Blue.

 Tel: 1-631-559-9269 1-516-512-3133

 Email: info@creative-biomart.com  Fax: 1-631-938-8127

 45-1 Ramsey Road, Shirley, NY 11967, USA