

# Recombinant Human EPHA1 Protein, Myc/DDK-tagged, C13 and N15-labeled

Cat. No. EPHA1-3712H Lot. No. (See product label)

## SPECIFICATION

### Product Overview

EPHA1 MS Standard C13 and N15-labeled recombinant protein (NP\_005223) with a C-terminal MYC/DDK tag, was expressed in HEK293 cells.

### Species

Human

### Source

HEK293

### Description

This gene belongs to the ephrin receptor subfamily of the protein-tyrosine kinase family. EPH and EPH-related receptors have been implicated in mediating developmental events, particularly in the nervous system. Receptors in the EPH subfamily typically have a single kinase domain and an extracellular region containing a Cys-rich domain and 2 fibronectin type III repeats. The ephrin receptors are divided into 2 groups based on the similarity of their extracellular domain sequences and their affinities for binding ephrin-A and ephrin-B ligands. This gene is expressed in some human cancer cell lines and has been implicated in carcinogenesis.

### Molecular Mass

107.9 kDa

### AA Sequence

MERRWPLGLGLVLLLCAPLPPGAHAKEVTLMDTSKAQGELGWLLDPPKDGWSEQQ  
 QILNGTPLYMYQDCPMQGRRTDHWLRSNWIYRGEEASRVHVELQFTVRDCKSFP  
 GGAGPLGCKETFNLLYMESDQDVGIQLRRPLFQKVTTVAADQSFTIRDLAGSVKLN  
 VERCSLGRLLTRGLYLAFHNPGACVALSVRVFYQRCPETLNGLAQFPDTPGPAG  
 LVEVAGTCLPHARASPRPSGAPRMHCSPDGEWLVPVGRCHCEPGYEEGGSGEAC

 Tel: 1-631-559-9269 1-516-512-3133

 Email: [info@creative-biomart.com](mailto:info@creative-biomart.com)  Fax: 1-631-938-8127

 45-1 Ramsey Road, Shirley, NY 11967, USA

VACPSGSYRMDMDTPHCLTCPQQSTAASEGATICCTCESGHYRAPGEGPQVACTGP  
 PSAPRNLSFSASGTQLSLRWEPPADTGGRRQDVRYSVRCSQCQGTAAQDGGPCQPC  
 GVGVHFSPGARGLTTPAVHVNGLEPYANYTFNVEAQNGVSGLGSSGHASTSVSISM  
 GHAESLSGLSLRLVKKEPRQLELTWAGSRPRSPGANLTYELHVLNQDEERYQMVLE  
 PRVLLTELQPDTTYIVRVRMLTPLGPGPFSPDHEFRTSPPVSRGLTGGEIVAVIFGLL  
 LGAALLGILVFRSRRAQRQRQRDRATDVEDKDLWLKPYVDLQAYEDPAQG  
 ALDFTRELDPAWLMVDTVIGEGEFGEVYRGTLRRLPSQDCKTVAIKTLKDTSPGGQW  
 WNFLREATIMGQFSHPHILHLEGVVTKRKPIMIITEFMENGALDAFLREREDQLVPGQ  
 LVAMLQGIASGMNYLSNHNYVHRDLAARNILVNQNLCKVSDFGLTRLLDDFDGTYE  
 TQGGKIPIRWTAPEAIAHRIFTTASDVWSFGIVMWEVLSFGDKPYGEMSNQEVMKSI  
 EDGYRLPPPVDPCAPLYELMKNCWAYDRARRPHFQKLQAHLEQLLANPHSLRTIAN  
 FDPVRTLRPLSLSGSDGIPYRTVSEWLESIRMKRYILHFHSAGLDTMECVLELTAEDL  
 TQMGITLPGHQKRILCSIQGFKDRTRPLEQKLISEEDLAANDILDYKDDDDKV

**Purity** > 80% as determined by SDS-PAGE and Coomassie blue staining

**Stability** Stable for 3 months from receipt of products under proper storage and handling conditions.

**Storage** Store at -80 centigrade. Avoid repeated freeze-thaw cycles.

**Concentration** 50 µg/mL as determined by BCA

**Storage Buffer** 100 mM glycine, 25 mM Tris-HCl, pH 7.3.

## GENE INFORMATION

**Gene Name** EPHA1 EPH receptor A1 [ Homo sapiens (human) ]

**Official Symbol** EPHA1

 Tel: 1-631-559-9269 1-516-512-3133

 Email: [info@creative-biomart.com](mailto:info@creative-biomart.com)  Fax: 1-631-938-8127

 45-1 Ramsey Road, Shirley, NY 11967, USA

**Synonyms** EPHA1; EPH receptor A1; EphA1, EPHT, EPHT1; ephrin type-A receptor 1; EPH; hEpha1; oncogene EPH; eph tyrosine kinase 1; soluble EPHA1 variant 1; soluble EPHA1 variant 2; tyrosine-protein kinase receptor EPH; erythropoietin-producing hepatoma receptor; erythropoietin-producing hepatoma amplified sequence; EPHT; EPHT1; MGC163163;

**Gene ID** [2041](#)

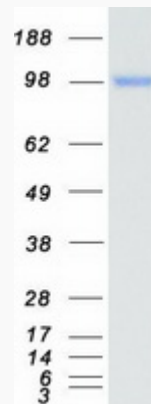
**mRNA Refseq** [NM\\_005232](#)

**Protein Refseq** [NP\\_005223](#)

**MIM** [179610](#)

**UniProt ID** [P21709](#)

**SDS-PAGE**



 Tel: 1-631-559-9269 1-516-512-3133

 Email: [info@creative-biomart.com](mailto:info@creative-biomart.com)  Fax: 1-631-938-8127

 45-1 Ramsey Road, Shirley, NY 11967, USA