

## Recombinant Dog EPHA2 Protein, Fc-tagged

Cat. No. EPHA2-01D Lot. No. (See product label)

### SPECIFICATION

<b>Product Overview</b>	Recombinant Dog EPHA2 Protein, fused to Fc-tag, was expressed in HEK293.
<b>Species</b>	Dog
<b>Source</b>	HEK293
<b>Description</b>	<p>This gene belongs to the ephrin receptor subfamily of the protein-tyrosine kinase family. EPH and EPH-related receptors have been implicated in mediating developmental events, particularly in the nervous system. Receptors in the EPH subfamily typically have a single kinase domain and an extracellular region containing a Cys-rich domain and 2 fibronectin type III repeats. The ephrin receptors are divided into 2 groups based on the similarity of their extracellular domain sequences and their affinities for binding ephrin-A and ephrin-B ligands. This gene encodes a protein that binds ephrin-A ligands. Mutations in this gene are the cause of certain genetically-related cataract disorders.</p>
<b>Form</b>	PBS, pH 7.4, 0.1mM PMSF, 1 mM EDTA.
<b>Molecular Mass</b>	79 kDa
<b>AA Sequence</b>	<p>AQGKEVLLDFAAAK GELGWLTHPYGKGWDLMQNIMDDMPIYMY SVCNVVAGDQD          NWLRTNWVYRGEAERIFIELKFTVRDCNSFP GGASSCKETFNLYYAESDVDYGTNF          QKRQFTKIDTIAPDEITDIGACVALLSVRVYYKKCEPELLQGLARFPETIAGSDAPSLAT          VAGTCVDHAVVPPGGEEPRMHCAVDGEWL VPIGQCLCQAGYEKVEDACQACSPG          FFKSEASESPCLECPVHTVLSSEGATFCDC EEGYFRAPQDLLSMPCTRPPSAPHYL</p>

 Tel: 1-631-559-9269 1-516-512-3133

 Email: [info@creative-biomart.com](mailto:info@creative-biomart.com)  Fax: 1-631-938-8127

 45-1 Ramsey Road, Shirley, NY 11967, USA



TAVGMGAKVELRWTPPQDSGGRDDIVYSVTCEQCWPESGECGPCEASVRYSEPP  
 HALTRTSVTVSDLEPHMNYTFAVEARNGVSELVASRSFRTASVSINQTEPPKVKLEG  
 RTTTSLSVSWSSIPPPQQSRVWKYEVTYRKKGDSNSYNVRRTEGFSVTLDDLAPDTT  
 YLIQVQALTQEGQGAGSKIHEFQTLSTEASGNLAIEGRMDSCDKTHTCPPCPAPELL  
 GGPSVFLFPPKPKDTLMISRTPEVTCVVVDVSHEDPEVKFNWYVDGVEVHNAKTKP  
 REEQYNSTYRVVSVLTVLHQDWLNGKEYKCKVSNKALPAPIEKTISKAKGQPREPQ  
 VYTLPPSRDELTKNQVSLTCLVKGFYPSDIAVEWESNGQPENNYKTTTPVLDSDGS  
 FFLYSKLTVDKSRWQQGNVFNCSVMHEALHNHYTQKSLSLSPGK

**Purity** > 90%

**Storage** Store it under sterile conditions at -20 to -80 centigrade. It is recommended that the protein be aliquoted for optimal storage. Avoid repeated freeze-thaw cycles.

**Concentration** 0.08mg/ml

## GENE INFORMATION

**Gene Name** EPHA2 EPH receptor A2 [ *Canis lupus familiaris* (dog) ]

**Official Symbol** EPHA2

**Synonyms** ECK; CTPA; ARCC2; CTPP1; CTRCT6

**Gene ID** 487421

**mRNA Refseq** XM\_038660228

**Protein Refseq** XP\_038516156

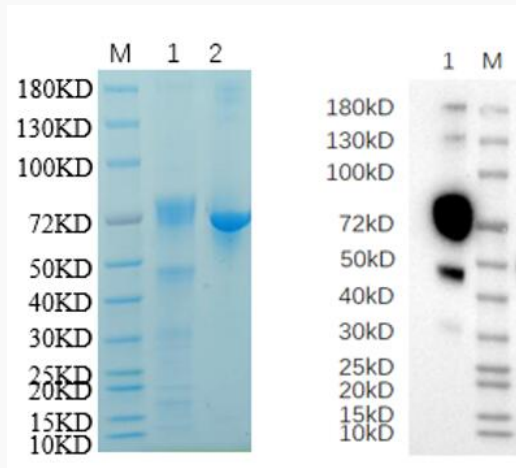
**UniProt ID** A0A286R219

Tel: 1-631-559-9269 1-516-512-3133

Email: [info@creative-biomart.com](mailto:info@creative-biomart.com) Fax: 1-631-938-8127

45-1 Ramsey Road, Shirley, NY 11967, USA

**Reducing 12% SDS-  
PAGE and WB  
analysis profiles of  
purified Dog Epha2**



Lane 1. Dog Epha2

Lane 2. BSA

 Tel: 1-631-559-9269 1-516-512-3133

 Email: [info@creative-biomart.com](mailto:info@creative-biomart.com)  Fax: 1-631-938-8127

 45-1 Ramsey Road, Shirley, NY 11967, USA