

## Recombinant Cynomolgus EPHA2 protein, His-Avi-tagged

Cat. No. EPHA2-1578C Lot. No. (See product label)

### SPECIFICATION

<b>Product Overview</b>	Recombinant Cynomolgus EPHA2 protein(Q1KL86)(Ala24-Ser534), fused with C-terminal His and Avi tag, was expressed in HEK293.
<b>Species</b>	Cynomolgus
<b>Source</b>	C-His-Avi
<b>ProteinLength</b>	Ala24-Ser534
<b>Tag</b>	C-His-Avi
<b>Form</b>	Lyophilized from 0.22µm filtered solution in PBS (pH 7.4). Normally 8% trehalose is added as protectant before lyophilization.
<b>Bio-activity</b>	
<b>Molecular Mass</b>	The protein has a predicted MW of 59.2 kDa. Due to glycosylation, the protein migrates to 60-70 kDa based on Tris-Bis PAGE result.
<b>Endotoxin</b>	Less than 1EU per µg by the LAL method.
<b>Purity</b>	> 95% as determined by Tris-Bis PAGE; > 95% as determined by HPLC.
<b>Storage</b>	Reconstituted protein stable at -80°C for 12 months, 4°C for 1 week. Use a manual defrost freezer and avoid repeated freeze-thaw cycles.

 Tel: 1-631-559-9269 1-516-512-3133

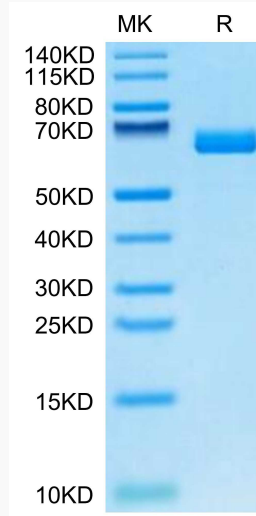
 Email: [info@creative-biomart.com](mailto:info@creative-biomart.com)  Fax: 1-631-938-8127

 45-1 Ramsey Road, Shirley, NY 11967, USA

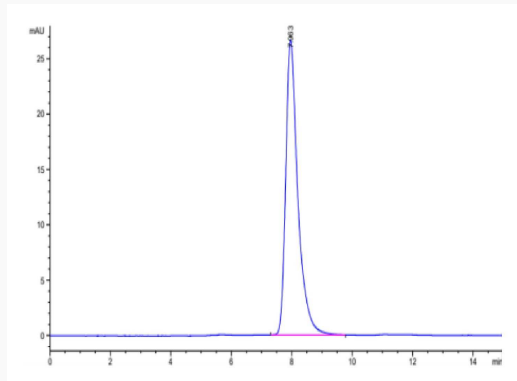
**Reconstitution**

Centrifuge tubes before opening. Reconstituting to a concentration more than 100  $\mu\text{g/ml}$  is recommended. Dissolve the lyophilized protein in distilled water.

**Tris-Bis PAGE**



**SEC-HPLC**



 Tel: 1-631-559-9269 1-516-512-3133

 Email: [info@creative-biomart.com](mailto:info@creative-biomart.com)  Fax: 1-631-938-8127

 45-1 Ramsey Road, Shirley, NY 11967, USA