

## Recombinant Mouse EPHA2 protein, His-tagged

Cat. No. EPHA2-1698M Lot. No. (See product label)

### SPECIFICATION

<b>Product Overview</b>	Recombinant Mouse EPHA2 protein(Q03145)(Lys26-Val538), fused with C-terminal His tag, was expressed in HEK293.
<b>Species</b>	Mouse
<b>Source</b>	C-His
<b>ProteinLength</b>	Lys26-Val538
<b>Tag</b>	C-His
<b>Form</b>	Supplied as 0.22µm filtered solution in PBS (pH 7.4).
<b>Molecular Mass</b>	The protein has a predicted MW of 57.95 kDa. Due to glycosylation, the protein migrates to 60-70 kDa based on Tris-Bis PAGE result.
<b>Endotoxin</b>	Less than 1EU per µg by the LAL method.
<b>Purity</b>	> 95% as determined by Tris-Bis PAGE; > 95% as determined by HPLC.
<b>Storage</b>	Valid for 12 months from date of receipt when stored at -80°C.; Recommend to aliquot the protein into smaller quantities for optimal storage. Please do not repeated freeze-thaw cycles.
<b>Reconstitution</b>	It is recommended that sterile water be added to the vial to prepare a stock solution of

 Tel: 1-631-559-9269 1-516-512-3133

 Email: [info@creative-biomart.com](mailto:info@creative-biomart.com)  Fax: 1-631-938-8127

 45-1 Ramsey Road, Shirley, NY 11967, USA

0.2 ug/ul. Centrifuge the vial at 4°C before opening to recover the entire contents.

## GENE INFORMATION

**Gene Name** Epha2 Eph receptor A2 [ *Mus musculus* ]

**Official Symbol** EPHA2

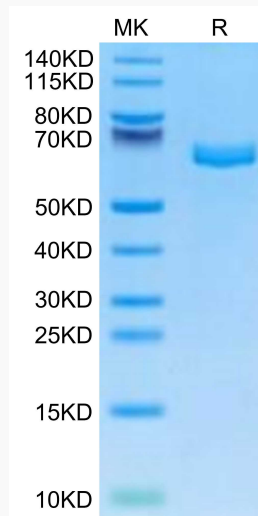
**Synonyms** EPHA2; Eph receptor A2; ephrin type-A receptor 2; epithelial cell kinase; tyrosine-protein kinase receptor ECK; tyrosine-protein kinase receptor MPK-5; tyrosine-protein kinase receptor SEK-2; Eck; Myk2; Sek2; Sek-2; AW545284;

**Gene ID** 13836

**mRNA Refseq** NM\_010139

**Protein Refseq** NP\_034269

### Tris-Bis PAGE



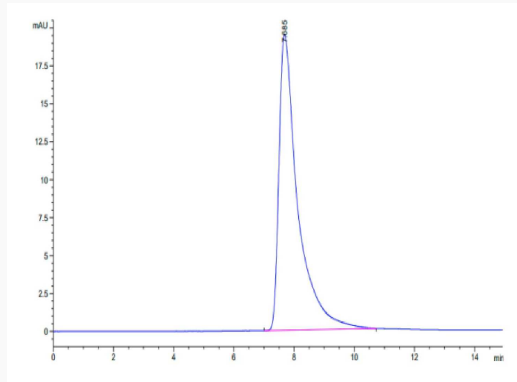
Tel: 1-631-559-9269 1-516-512-3133

Email: [info@creative-biomart.com](mailto:info@creative-biomart.com) Fax: 1-631-938-8127

45-1 Ramsey Road, Shirley, NY 11967, USA



SEC-HPLC



Tel: 1-631-559-9269 1-516-512-3133

Email: [info@creative-biomart.com](mailto:info@creative-biomart.com) Fax: 1-631-938-8127

45-1 Ramsey Road, Shirley, NY 11967, USA