

Recombinant Human EPHA2 protein, His-tagged

Cat. No. EPHA2-227H Lot. No. (See product label)

SPECIFICATION

Product Overview	Recombinant Human EPHA2 protein(P29317)(Ala24-Val537), fused with His tag, was expressed in HEK293.
Species	Human
Source	HEK293
ProteinLength	Ala24-Val537
Form	Lyophilized from 0.22 µm filtered solution in PBS, pH7.4.
Molecular Mass	The protein has a calculated MW of 57kDa.The reducing (R) heterodimer protein migrates as 40-65 kDa due to glycosylation
Endotoxin	<1EU/mg
Purity	SDS-PAGE>95%SEC>95%
Storage	Store at -20°C.
Reconstitution	sterile H3O

GENE INFORMATION

Gene Name [EPHA2 EPH receptor A2 \[Homo sapiens \]](#)

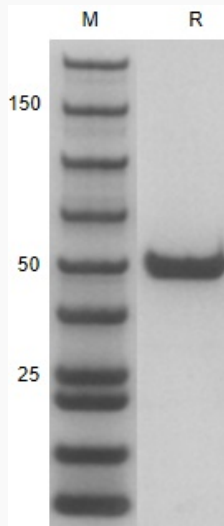
 Tel: 1-631-559-9269 1-516-512-3133

 Email: info@creative-biomart.com  Fax: 1-631-938-8127

 45-1 Ramsey Road, Shirley, NY 11967, USA

Official Symbol	EPHA2
Synonyms	EPHA2; EPH receptor A2; ECK, EphA2; ephrin type-A receptor 2; soluble EPHA2 variant 1; tyrosine-protein kinase receptor ECK; epithelial cell receptor protein tyrosine kinase; ECK; CTPA; ARCC2; CTPP1;
Gene ID	1969
mRNA Refseq	NM_004431
Protein Refseq	NP_004422
MIM	176946
UniProt ID	P29317

SDS-PAGE



The SDS-PAGE gel image displays two lanes. Lane M is a molecular weight marker with bands at 150, 50, and 25 kDa. Lane R shows a single protein band at approximately 50 kDa, corresponding to the EPHA2 protein.

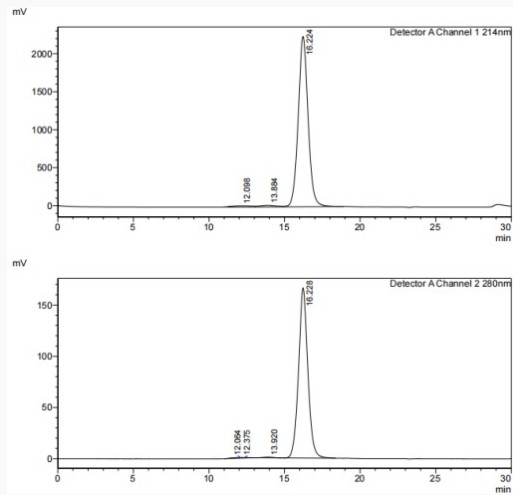
Tel: 1-631-559-9269 1-516-512-3133

Email: info@creative-biomart.com Fax: 1-631-938-8127

45-1 Ramsey Road, Shirley, NY 11967, USA



SDS-HPLC



Tel: 1-631-559-9269 1-516-512-3133

Email: info@creative-biomart.com Fax: 1-631-938-8127

45-1 Ramsey Road, Shirley, NY 11967, USA