

## Active Recombinant Human EPHA2 protein, His-tagged

Cat. No. EPHA2-2619H Lot. No. (See product label)

### SPECIFICATION

<b>Product Overview</b>	Active Recombinant Human EphA2/ECK Protein is produced by HEK293 expression system. The target protein is expressed with sequence (Gln25-Asn534) of human EphA2 (Accession #NP_004422.2) fused with a 6xHis tag at the C-terminus.
<b>Species</b>	Human
<b>Source</b>	HEK293
<b>ProteinLength</b>	Gln25-Asn534
<b>Form</b>	Lyophilized from a 0.22 µm filtered solution of PBS, pH 7.4.
<b>Bio-activity</b>	Measured by its binding ability in a functional ELISA. Immobilized Human EphA2 at 1 µg/mL (100 µL/well) can bind Human EFNA1 with a linear range of 0.098-4.084 ng/mL.
<b>Molecular Mass</b>	70 kDa
<b>Endotoxin</b>	< 0.1 EU/µg of the protein by LAL method.
<b>Purity</b>	> 97% by SDS-PAGE.
<b>Storage</b>	Store the lyophilized protein at -20°C to -80 °C for long term. After reconstitution, the protein solution is stable at -20 °C for 3 months, at 2-8 °C for up to 1 week.

 Tel: 1-631-559-9269 1-516-512-3133

 Email: [info@creative-biomart.com](mailto:info@creative-biomart.com)  Fax: 1-631-938-8127

 45-1 Ramsey Road, Shirley, NY 11967, USA

**Reconstitution** Reconstitute to a concentration of 0.1-0.5 mg/mL in sterile distilled water.

## GENE INFORMATION

**Gene Name** EPHA2 EPH receptor A2 [ Homo sapiens ]

**Official Symbol** EPHA2

**Synonyms** EPHA2; EPH receptor A2; ECK, EphA2; ephrin type-A receptor 2; soluble EPHA2 variant 1; tyrosine-protein kinase receptor ECK; epithelial cell receptor protein tyrosine kinase; ECK; CTPA; ARCC2; CTPP1;

**Gene ID** 1969

**mRNA Refseq** NM\_004431

**Protein Refseq** NP\_004422

**MIM** 176946

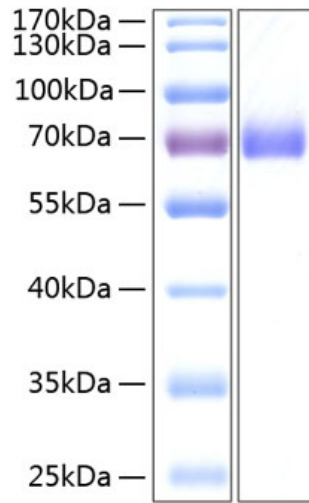
**UniProt ID** P29317

 Tel: 1-631-559-9269 1-516-512-3133

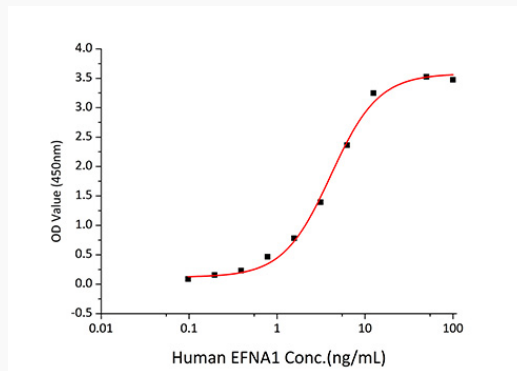
 Email: [info@creative-biomart.com](mailto:info@creative-biomart.com)  Fax: 1-631-938-8127

 45-1 Ramsey Road, Shirley, NY 11967, USA

**SDS-PAGE**



**Bio-activity**



 Tel: 1-631-559-9269 1-516-512-3133

 Email: [info@creative-biomart.com](mailto:info@creative-biomart.com)  Fax: 1-631-938-8127

 45-1 Ramsey Road, Shirley, NY 11967, USA