

# Recombinant Human EPH Receptor A2, GST-tagged, Active

Cat. No. EPHA2-300H Lot. No. (See product label)

## SPECIFICATION

<b>Product Overview</b>	Recombinant human EPHA2 (561-end) was expressed by baculovirus in <i>Sf9 insect cell</i> using an N-terminal GST tag. MW=72kDa.
<b>Species</b>	Human
<b>Source</b>	Sf9 Cells
<b>Protein Length</b>	561-end a.a.
<b>Description</b>	EPHA2 is a member of the ephrin receptor subfamily of protein-tyrosine kinases that bind the ephrin-A ligand and have diverse cellular function. EPHA2 has been shown to be an oncoprotein of importance in a range of cancers. EPHA2 is overexpressed in several human cancer types and promotes malignancy through a mechanism involving RhoA-dependent destabilization of adherens junctions. EPHA2 overexpression induces a FAK-dependent increase in MMP-2 expression and invasiveness and this process that can be reversed by ligation of EPHA2.
<b>Sequence</b>	561-end.
<b>Applications</b>	Kinase Assay, Western Blot.
<b>Storage And Stability</b>	Store product at -70oC. For optimal storage, aliquot target into smaller quantities after centrifugation and store at recommended temperature. For most favorable performance, avoid repeated handling and multiple freeze/thaw cycles.

 Tel: 1-631-559-9269 1-516-512-3133

 Email: [info@creative-biomart.com](mailto:info@creative-biomart.com)  Fax: 1-631-938-8127

 45-1 Ramsey Road, Shirley, NY 11967, USA

## GENE INFORMATION

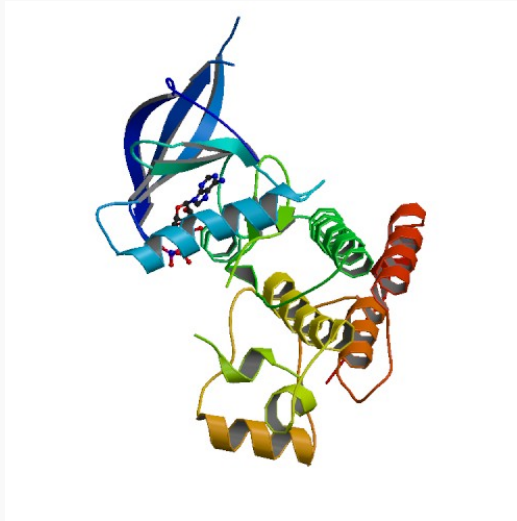
<b>Gene Name</b>	EPHA2 EPH receptor A2 [ Homo sapiens ]
<b>Synonyms</b>	EPHA2; EPH receptor A2; ECK; ARCC2; protein tyrosine kinase; soluble EPHA2 variant 1; soluble EPHA2 variant 1; epithelial cell receptor protein tyrosine kinase; ephrin receptor EphA2; EC 2.7.10.1
<b>Gene ID</b>	1969
<b>mRNA Refseq</b>	NM_004431
<b>Protein Refseq</b>	NP_004422
<b>MIM</b>	176946
<b>UniProt ID</b>	P29317
<b>Chromosome Location</b>	1p36
<b>Pathway</b>	Axon guidance
<b>Function</b>	ATP binding; ephrin receptor activity; nucleotide binding; protein binding; receptor activity; transferase activity

 Tel: 1-631-559-9269 1-516-512-3133

 Email: [info@creative-biomart.com](mailto:info@creative-biomart.com)  Fax: 1-631-938-8127

 45-1 Ramsey Road, Shirley, NY 11967, USA

PDB rendering based  
on 1mqb.



 Tel: 1-631-559-9269 1-516-512-3133

 Email: [info@creative-biomart.com](mailto:info@creative-biomart.com)  Fax: 1-631-938-8127

 45-1 Ramsey Road, Shirley, NY 11967, USA