

Recombinant Human EPHA2 Protein, MYC/DDK-tagged, C13 and N15-labeled

Cat. No. EPHA2-321H **Lot. No.** (See product label)

SPECIFICATION

Product Overview	EPHA2 MS Standard C13 and N15-labeled recombinant protein (NP_004422) with a C-terminal MYC/DDK tag, was expressed in HEK293 cells.
Species	Human
Source	HEK293
Description	This gene belongs to the ephrin receptor subfamily of the protein-tyrosine kinase family. EPH and EPH-related receptors have been implicated in mediating developmental events, particularly in the nervous system. Receptors in the EPH subfamily typically have a single kinase domain and an extracellular region containing a Cys-rich domain and 2 fibronectin type III repeats. The ephrin receptors are divided into 2 groups based on the similarity of their extracellular domain sequences and their affinities for binding ephrin-A and ephrin-B ligands. This gene encodes a protein that binds ephrin-A ligands. Mutations in this gene are the cause of certain genetically-related cataract disorders. [provided by RefSeq, May 2010]
Molecular Mass	108.1 kDa
AA Sequence	MELQAARACFALLWGCALAAAAAQQKEVLLDFAAAGGELGWLTHPYGKGWDLM QNIMNDMPIYMYSVCNVMSGDQDNWLRRTNWVYRGEAERIFIELKFTVRDCNSFPG GASSCKETFNLYAESDLDYGTNFQKRLFTKIDTIAPDEITVSSDFEARHVKLNVEER SVGPLTRKGFYLAHQDIGACVALLSVRVYYKKCEPELLQGLAHPETIAGSDAPSLATV

 Tel: 1-631-559-9269 1-516-512-3133

 Email: info@creative-biomart.com  Fax: 1-631-938-8127

 45-1 Ramsey Road, Shirley, NY 11967, USA

AGTCVDHAVVPPGGEEPRMHCAVDGEWLVPIGQCLCQAGYEKVEDACQACSPGF
 FKFEASESPCLECPEHTLPSPEGATSCECEEGFFRAPQDPASMPCTRPPSAPHYLT
 AVGMGAKVELRWTPPQDSGGREDIVYSVTCEQCWPESGECGPCEASVRYSEPPH
 GLTRTSVTVSDLEPHMNYTFTVEARNGVSGLVTSRSFRTASVSINQTEPPKVRLEGR
 STTSLSVSWSSIPPPQQSRVWKYEVTYRKKGDSNSYNVRRTEGFSVTLDDLAPDTTY
 LVQVQALTQEGQGAGSKVHEFQTLSPEGSGNLAVIGGVAVGVVLLLVLAVGVGFFIHR
 RRKNQRARQSPEDVYFSKSEQLKPLKTYVDPHTYEDPNQAVLKFTTEIHPSCVTRQ
 KVIGAGEFGEVYKGMKLTSSGKKEVPVAIKTLKAGYTEKQRVDFLGEAGIMGQFSHH
 NIIRLEGVISKYKPMMIITEYMENGALDKFLREKDGESVLQLVGMLRGAAGMKYLA
 NMNYVHRDLAARNILVNSNLVCKVSDFGLSRVLEDDPEATYTTSGGKIPIRWTAPEAI
 SYRKFTSASDVWSFGIVMWEVMTYGERPYWELSNHEVMKAINDFRLPTPMDPCS
 AIYQLMMQCWQQERARRPKFADIVSILDKLIRAPDSLKTLADFDPRVSIRLPSTSGSE
 GVPFRTVSEWLESIKMQQYTEHFMAAGYTAIEKVQMTNDDIKRIGVRLPGHQKRIA
 YSLLGLKDQVNTVGIPITRTRPLEQKLISEEDLAANDILDYKDDDDKV

Purity > 80% as determined by SDS-PAGE and Coomassie blue staining

Stability Stable for 3 months from receipt of products under proper storage and handling conditions.

Storage Store at -80 centigrade. Avoid repeated freeze-thaw cycles.

Concentration 50 µg/mL as determined by BCA

Storage Buffer 100 mM glycine, 25 mM Tris-HCl, pH 7.3.

GENE INFORMATION

Gene Name [EPHA2 EPH receptor A2 \[Homo sapiens \(human\) \]](#)

Official Symbol [EPHA2](#)

 Tel: 1-631-559-9269 1-516-512-3133

 Email: info@creative-biomart.com  Fax: 1-631-938-8127

 45-1 Ramsey Road, Shirley, NY 11967, USA

Synonyms EPHA2; EPH receptor A2; ECK, EphA2; ephrin type-A receptor 2; soluble EPHA2 variant 1; tyrosine-protein kinase receptor ECK; epithelial cell receptor protein tyrosine kinase; ECK; CTPA; ARCC2; CTPP1;

Gene ID 1969

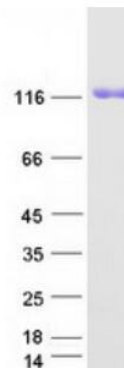
mRNA Refseq NM_004431

Protein Refseq NP_004422

MIM 176946

UniProt ID P29317

SDS-PAGE



 Tel: 1-631-559-9269 1-516-512-3133

 Email: info@creative-biomart.com  Fax: 1-631-938-8127

 45-1 Ramsey Road, Shirley, NY 11967, USA