

Recombinant Human EPHA2 Protein (Ala24-Asn534), C-Fc tagged

Cat. No. EPHA2-3266H Lot. No. (See product label)

SPECIFICATION

Product Overview	Recombinant human EPHA2 (Ala24-Asn534) protein fused with the C-terminal Fc tag was expressed in Mammalian cells.
Species	Human
Source	Mammalian Cells
ProteinLength	Ala24-Asn534
Molecular Mass	81.21 kDa
Purity	>90 % as determined by SDS-PAGE.
Notes	For research use only.
Storage	Use a manual defrost freezer and avoid repeated freeze thaw cycles. Store at 2 to 8 centigrade for one week. Store at -20 to -80 centigrade for twelve months from the date of receipt.
Storage Buffer	Supplied as solution form in PBS or lyophilized from PBS.
Reconstitution	Reconstitute in sterile water for a stock solution.
Shipping	In general, proteins are provided as lyophilized powder/frozen liquid. They are

 Tel: 1-631-559-9269 1-516-512-3133

 Email: info@creative-biomart.com  Fax: 1-631-938-8127

 45-1 Ramsey Road, Shirley, NY 11967, USA

shipped out with dry ice/blue ice unless customers require otherwise.

GENE INFORMATION

Gene Name EPHA2 EPH receptor A2 [Homo sapiens (human)]

Official Symbol EPHA2

Synonyms EPHA2; EPH receptor A2; ECK, EphA2; ephrin type-A receptor 2; soluble EPHA2 variant 1; tyrosine-protein kinase receptor ECK; epithelial cell receptor protein tyrosine kinase; ECK; CTPA; ARCC2; CTPP1;

Gene ID 1969

mRNA Refseq NM_004431

Protein Refseq NP_004422

MIM 176946

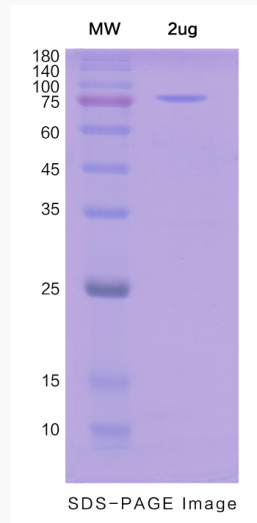
UniProt ID P29317

 Tel: 1-631-559-9269 1-516-512-3133

 Email: info@creative-biomart.com  Fax: 1-631-938-8127

 45-1 Ramsey Road, Shirley, NY 11967, USA

SDS-PAGE



 Tel: 1-631-559-9269 1-516-512-3133

 Email: info@creative-biomart.com  Fax: 1-631-938-8127

 45-1 Ramsey Road, Shirley, NY 11967, USA