

Recombinant Full Length Human EPHA2 Protein, C-Flag-tagged

Cat. No. EPHA2-698HFL **Lot. No.** (See product label)

SPECIFICATION

Product Overview	Recombinant Full Length Human EPHA2 Protein, fused to Flag-tag at C-terminus, was expressed in Mammalian cells.
Species	Human
Source	Mammalian Cells
Description	This gene belongs to the ephrin receptor subfamily of the protein-tyrosine kinase family. EPH and EPH-related receptors have been implicated in mediating developmental events, particularly in the nervous system. Receptors in the EPH subfamily typically have a single kinase domain and an extracellular region containing a Cys-rich domain and 2 fibronectin type III repeats. The ephrin receptors are divided into 2 groups based on the similarity of their extracellular domain sequences and their affinities for binding ephrin-A and ephrin-B ligands. This gene encodes a protein that binds ephrin-A ligands. Mutations in this gene are the cause of certain genetically-related cataract disorders.
Form	25 mM Tris HCl, pH 7.3, 100 mM glycine, 10% glycerol.
Molecular Mass	108.1 kDa
AA Sequence	MELQAARACFALLWGCALAAAAAQQGKEVLLDFAAAGGELGWLTHPYGKGWDLM QNIMNDMPIYMY SVC NVMSGDQDNWLR TNWVYRGEAERIFIELKFTVRDCNSFPG GASSCKETFNLYAESDL DYGTNFQKRLFT KIDTIAPDEITVSSDFEARHVKLNVEER

 Tel: 1-631-559-9269 1-516-512-3133

 Email: info@creative-biomart.com  Fax: 1-631-938-8127

 45-1 Ramsey Road, Shirley, NY 11967, USA

SVGPLTRKGFYLAFQDIGACVALLSVRVYYKKCEPELLQGLAH FPETIAGSDAPSLAT
 VAGTCVDHAVVPPGGEEPRMHCAVDGEWLVPIGQCLCQAGYEKVEDACQACSPG
 F FKFEASESPCLECPEHTLPSPEGATSCECEEGFFRAPQDPASMPCTRPPSAPHYL
 TAVGMGAKVELRWTP PQDSGGREDIVYSVTCEQCWPESGECGPCEASVRYSEPP
 HGLTRTSVTVSDLEPHMNYTFTVEARNGVSG LVTSRSFRTASVSINQTEPPKVRLE
 GRSTTSLSVSWSIPPPQQSRVWKYEVTYRKKGDSNSYNVRRTEGF SVTLDDLAPD
 TTYLVQVQALTQEGQGAGSKVHEFQTLSPGSGNLAVIGGVAVGVVLLLVLAVGVGF
 FIHR RRKNQRARQSPEDVYFSKSEQLKPLKTYVDPHTYEDPNQAVLKFTTEIHPSCV
 TRQKVIGAGEFGEVYKG MLKTSSGKKEVPVAIKTLKAGYTEKQRVDFLGEAGIMGQ
 FSHHNIIRLEGVISKYKPMMIITEYMENGAL DKFLREKDGFEFVLQLVGMLRGIAAGM
 KYLANMNYVHRDLAARNILVNSNLVCKVSDFGLSRVLEDDPEA TYTTSGGKIPIRWT
 APEAISYRKFTSASDVWSFGIVMWEVMTYGERPYWELSNHEVMKAINDFRLPTPM
 DCPSAIYQLMMQCWQQRARRPKFADIVSILDKLIRAPDSLKTLADFDPRVSIRLPST
 SGSEGVPFRTVS EWLESIKMQQYTEHFMAAGYTAIEKVVQMTNDDIKRIGVRLPGH
 QKRIAYSLGLKDQVNTVGIPITRTRPLEQKLISEEDLAANDILDYKDDDDKV

Purity > 80% as determined by SDS-PAGE and Coomassie blue staining.

Stability Stable for 12 months from the date of receipt of the product under proper storage and handling conditions. Avoid repeated freeze-thaw cycles.

Storage Store at -80 centigrade.

Concentration >50 ug/mL as determined by microplate BCA method.

Preparation Recombinant protein was captured through anti-DDK affinity column followed by conventional chromatography steps.

Protein Families Druggable Genome, Protein Kinase, Transmembrane

 Tel: 1-631-559-9269 1-516-512-3133

 Email: info@creative-biomart.com  Fax: 1-631-938-8127

 45-1 Ramsey Road, Shirley, NY 11967, USA

Protein Pathways	Axon guidance
-------------------------	---------------

Full Length	Full L.
--------------------	---------

GENE INFORMATION

Gene Name	EPHA2 EPH receptor A2 [Homo sapiens (human)]
------------------	--

Official Symbol	EPHA2
------------------------	-------

Synonyms	ECK; CTPA; ARCC2; CTPP1; CTRCT6
-----------------	---------------------------------

Gene ID	1969
----------------	------

mRNA Refseq	NM_004431.5
--------------------	-------------

Protein Refseq	NP_004422.2
-----------------------	-------------

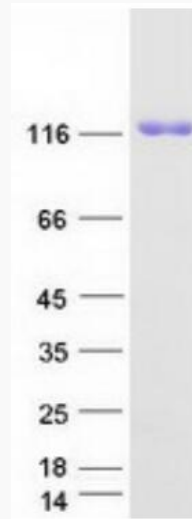
MIM	176946
------------	--------

UniProt ID	P29317
-------------------	--------

 Tel: 1-631-559-9269 1-516-512-3133

 Email: info@creative-biomart.com  Fax: 1-631-938-8127

 45-1 Ramsey Road, Shirley, NY 11967, USA



Coomassie blue staining of purified EPHA2 protein.

 Tel: 1-631-559-9269 1-516-512-3133

 Email: info@creative-biomart.com  Fax: 1-631-938-8127

 45-1 Ramsey Road, Shirley, NY 11967, USA