

Recombinant Human EPHB1 Protein (Ser564-Ala984), C-His tagged

Cat. No. EPHB1-3272H Lot. No. (See product label)

SPECIFICATION

Product Overview	Recombinant human EPHB1 (Ser564-Ala984) protein fused with the C-terminal His tag was expressed in Mammalian cells.
Species	Human
Source	Mammalian Cells
ProteinLength	Ser564-Ala984
Molecular Mass	46.31 kDa
Purity	>90 % as determined by SDS-PAGE.
Notes	For research use only.
Storage	Use a manual defrost freezer and avoid repeated freeze thaw cycles. Store at 2 to 8 centigrade for one week. Store at -20 to -80 centigrade for twelve months from the date of receipt.
Storage Buffer	Supplied as solution form in PBS or lyophilized from PBS.
Reconstitution	Reconstitute in sterile water for a stock solution.
Shipping	In general, proteins are provided as lyophilized powder/frozen liquid. They are

 Tel: 1-631-559-9269 1-516-512-3133

 Email: info@creative-biomart.com  Fax: 1-631-938-8127

 45-1 Ramsey Road, Shirley, NY 11967, USA

shipped out with dry ice/blue ice unless customers require otherwise.

GENE INFORMATION

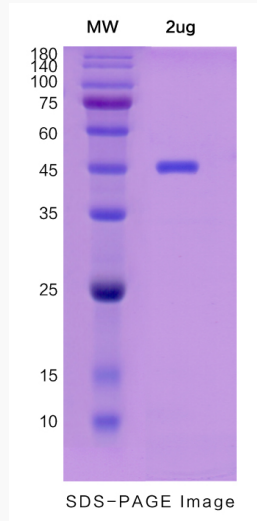
Gene Name	EPHB1 EPH receptor B1 [Homo sapiens (human)]
Official Symbol	EPHB1
Synonyms	EPHB1; EPH receptor B1; EphB1, EPHT2; ephrin type-B receptor 1; Hek6; EK6; EPH-like kinase 6; eph tyrosine kinase 2; soluble EPHB1 variant 1; tyrosine-protein kinase receptor EPH-2; neuronally-expressed EPH-related tyrosine kinase; ELK; NET; EPHT2; FLJ37986;
Gene ID	2047
mRNA Refseq	NM_004441
Protein Refseq	NP_004432
MIM	600600
UniProt ID	P54762

 Tel: 1-631-559-9269 1-516-512-3133

 Email: info@creative-biomart.com  Fax: 1-631-938-8127

 45-1 Ramsey Road, Shirley, NY 11967, USA

SDS-PAGE



 Tel: 1-631-559-9269 1-516-512-3133

 Email: info@creative-biomart.com  Fax: 1-631-938-8127

 45-1 Ramsey Road, Shirley, NY 11967, USA