

Active Recombinant Human EPHB1 Protein, GST-tagged

Cat. No. EPHB1-3397H Lot. No. (See product label)

SPECIFICATION

Product Overview	Human EPHB1 (NP_003148.2, 1 a.a. - 841 a.a.) full-length recombinant protein with GST tag expressed in Baculovirus infected Sf21 cells.
Species	Human
Source	Insect Cells
Description	<p>Ephrin receptors and their ligands, the ephrins, mediate numerous developmental processes, particularly in the nervous system. Based on their structures and sequence relationships, ephrins are divided into the ephrin-A (EFNA) class, which are anchored to the membrane by a glycosylphosphatidylinositol linkage, and the ephrin-B (EFNB) class, which are transmembrane proteins. The Eph family of receptors are divided into 2 groups based on the similarity of their extracellular domain sequences and their affinities for binding ephrin-A and ephrin-B ligands. Ephrin receptors make up the largest subgroup of the receptor tyrosine kinase (RTK) family. The protein encoded by this gene is a receptor for ephrin-B family members. [provided by RefSeq, Jul 2008]</p>
Form	Liquid
Bio-activity	The activity was measured by off-chip mobility shift assay. The enzyme was incubated with fluorescence-labeled substrate and Mg (or Mn)/ATP. The phosphorylated and unphosphorylated substrates were separated and detected by LabChip™3000.

 Tel: 1-631-559-9269 1-516-512-3133

 Email: info@creative-biomart.com  Fax: 1-631-938-8127

 45-1 Ramsey Road, Shirley, NY 11967, USA

	Substrate: Blk/Lyntide. ATP: 100 µM.
Molecular Mass	73 kDa
Purity	68 % by SDS-PAGE/CBB staining.
Applications	Functional Study SDS-PAGE
Storage	Store at -80 centigrade. Aliquot to avoid repeated freezing and thawing.
Storage Buffer	In 50 mM Tris-HCl, 150 mM NaCl, pH 7.5 (0.05% Brij35, 1 mM DTT, 10% glycerol)

GENE INFORMATION

Gene Name	EPHB1 EPH receptor B1 [Homo sapiens]
Official Symbol	EPHB1
Synonyms	EPHB1; EPH receptor B1; EphB1 , EPHT2; ephrin type-B receptor 1; Hek6; EK6; EPH-like kinase 6; eph tyrosine kinase 2; soluble EPHB1 variant 1; tyrosine-protein kinase receptor EPH-2; neuronally-expressed EPH-related tyrosine kinase; ELK; NET; EPHT2; FLJ37986;
Gene ID	2047
mRNA Refseq	NM_004441
Protein Refseq	NP_004432

 Tel: 1-631-559-9269 1-516-512-3133

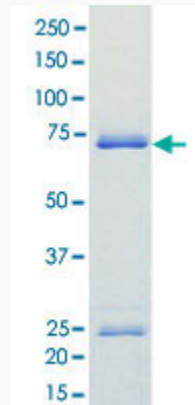
 Email: info@creative-biomart.com  Fax: 1-631-938-8127

 45-1 Ramsey Road, Shirley, NY 11967, USA

MIM 600600

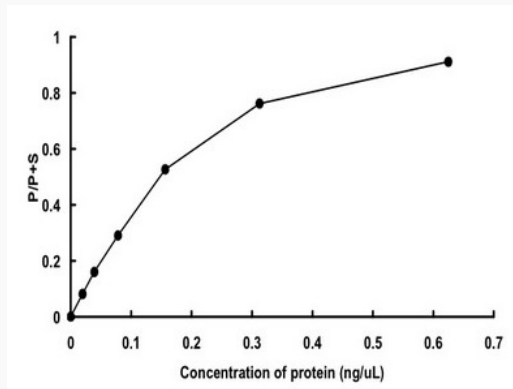
UniProt ID P54762

Quality Control Testing



Loading 1 µg protein in SDS-PAGE

Result of activity analysis



 Tel: 1-631-559-9269 1-516-512-3133

 Email: info@creative-biomart.com  Fax: 1-631-938-8127

 45-1 Ramsey Road, Shirley, NY 11967, USA