

Recombinant Human EPHB1 Protein, GST-tagged

Cat. No. EPHB1-3399H Lot. No. (See product label)

SPECIFICATION

Product Overview	Human EPHB1 partial ORF (NP_004432.1, 221 a.a. - 320 a.a.) recombinant protein with GST-tag at N-terminal.
Species	Human
Source	Wheat Germ
Description	Ephrin receptors and their ligands, the ephrins, mediate numerous developmental processes, particularly in the nervous system. Based on their structures and sequence relationships, ephrins are divided into the ephrin-A (EFNA) class, which are anchored to the membrane by a glycosylphosphatidylinositol linkage, and the ephrin-B (EFNB) class, which are transmembrane proteins. The Eph family of receptors are divided into 2 groups based on the similarity of their extracellular domain sequences and their affinities for binding ephrin-A and ephrin-B ligands. Ephrin receptors make up the largest subgroup of the receptor tyrosine kinase (RTK) family. The protein encoded by this gene is a receptor for ephrin-B family members. [provided by RefSeq, Jul 2008]
Molecular Mass	36.63 kDa
AA Sequence	ARGTCIPNAEEVDVPIKLYCNGDGEWMVPIGRCTCKPGYEPENSVACKACPAGTFK ASQEAEGC SHCPSNSRSPAEASPICTCRTGYRADFDPPPEVACT
Applications	Enzyme-linked Immunoabsorbent Assay Western Blot (Recombinant protein)

 Tel: 1-631-559-9269 1-516-512-3133

 Email: info@creative-biomart.com  Fax: 1-631-938-8127

 45-1 Ramsey Road, Shirley, NY 11967, USA

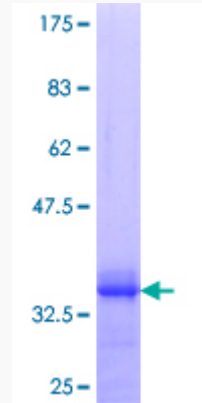
	Antibody Production Protein Array
Notes	Best use within three months from the date of receipt of this protein.
Storage	Store at -80 centigrade. Aliquot to avoid repeated freezing and thawing.
Storage Buffer	50 mM Tris-HCl, 10 mM reduced Glutathione, pH=8.0 in the elution buffer.
GENE INFORMATION	
Gene Name	EPHB1 EPH receptor B1 [Homo sapiens]
Official Symbol	EPHB1
Synonyms	EPHB1; EPH receptor B1; EphB1 , EPHT2; ephrin type-B receptor 1; Hek6; EK6; EPH-like kinase 6; eph tyrosine kinase 2; soluble EPHB1 variant 1; tyrosine-protein kinase receptor EPH-2; neuronally-expressed EPH-related tyrosine kinase; ELK; NET; EPHT2; FLJ37986;
Gene ID	2047
mRNA Refseq	NM_004441
Protein Refseq	NP_004432
MIM	600600
UniProt ID	P54762

 Tel: 1-631-559-9269 1-516-512-3133

 Email: info@creative-biomart.com  Fax: 1-631-938-8127

 45-1 Ramsey Road, Shirley, NY 11967, USA

**Quality Control
Testing**



12.5% SDS-PAGE Stained with Coomassie Blue.

 Tel: 1-631-559-9269 1-516-512-3133

 Email: info@creative-biomart.com  Fax: 1-631-938-8127

 45-1 Ramsey Road, Shirley, NY 11967, USA