

# Recombinant Human EPHB1 protein(Met18-Pro540), hFc-tagged

**Cat. No.** EPHB1-374H    **Lot. No.** (See product label)

## SPECIFICATION

<b>Product Overview</b>	Recombinant Human EPHB1 protein(Met18-Pro540) was expressed in HEK293, fused with the Fc region of human IgG1 at the C-terminus.
<b>Species</b>	Human
<b>Source</b>	HEK293
<b>ProteinLength</b>	Met18-Pro540
<b>Form</b>	Lyophilized from a 0.2 µm filtered solution of 20mM Tris-HCl, 150mM NaCl, pH 8.0.
<b>Molecular Mass</b>	85.6 Kda
<b>AA Sequence</b>	<p>MEETLMDTRTATAELGWTANPASGW EEVSGYDENLNTIRTYQVCNVFEPN            QNNWLLTTFINRRGAHRIYTEMRFT VRDCSSLPNVP GSCKETFNLYYYET            DSVIATKKSAFWSEAPYLKVD TIAA DESFSQVDFGGRLMKVNTEVRSFGP            LTRNGFYLA FQDYGACMSLLSVRVF FKKCPSIVQNFAVFPETMTGAESTS            LVIARGTCIPNAEEVDVPIKLYCNG DGEWMVPIGRCTCKPGYEPENSVAC            KACPAGTFKASQEAEGCSHCPSNSR SPAEASPICTCRTGYRADFPPEV            ACTSVPSGPRNVISIVNETSIILEW HPPRETGGRDDVTYNIICKKCRADR            RSCSRCDNVEFVPRQLGLTECRVS ISSLWAHTPYTFDIQAINGVSSKSP            FPPQHVSVNITTNQAAPSTVPIMHQ VSATMRSITLSWPQPEQPNGIILDY            EIRYYEKEHNEFNSSMARSQTNTAR IDGLRPGMVYVVQVRARTVAGYGKF            SGKMC FQTLTDDDYKSELREQLPVD DIEGRMDEPKSCDKTHTCPPCPAPE</p>

 Tel: 1-631-559-9269    1-516-512-3133

 Email: [info@creative-biomart.com](mailto:info@creative-biomart.com)     Fax: 1-631-938-8127

 45-1 Ramsey Road, Shirley, NY 11967, USA

LLGGPSVFLFPPKPKDTLMISRTPE VTCVVVDVSHEDPEVKFNWYVDGVE  
 VHNATKPREEQYNSTYRVVSVLTV LHQDWLNGKEYKCKVSNKALPAPIE  
 KTISKAKGQPREPQVYTLPPSREEM TKNQVSLTCLVKGFYPSDIAVEWES  
 NGQPENNYKTTTPVLDSGDSFFLYS KLTVDKSRWQQGNVFCSCVMHEALH  
 NHYTQKSLSLSPGK

**Endotoxin** Less than 0.1 ng/μg (1 EU/μg) as determined by LAL test.

**Purity** Greater than 95% as determined by reducing SDS-PAGE.

**Storage** Lyophilized protein should be stored at ≤ -20°C, stable for one year after receipt.  
 Reconstituted protein solution can be stored at 2-8°C for 2-7 days.  
 Aliquots of reconstituted samples are stable at ≤ -20°C for 3 months.

**Reconstitution** Always centrifuge tubes before opening. Do not mix by vortex or pipetting.  
 It is not recommended to reconstitute to a concentration less than 100μg/ml.  
 Dissolve the lyophilized protein in distilled water.  
 Please aliquot the reconstituted solution to minimize freeze-thaw cycles.

## GENE INFORMATION

**Gene Name** EPHB1 EPH receptor B1 [ Homo sapiens ]

**Official Symbol** EPHB1

**Synonyms** EPHB1; EPH receptor B1; EphB1 , EPHT2; ephrin type-B receptor 1; Hek6; EK6;  
 EPH-like kinase 6; eph tyrosine kinase 2; soluble EPHB1 variant 1; tyrosine-protein  
 kinase receptor EPH-2; neuronally-expressed EPH-related tyrosine kinase; ELK;  
 NET; EPHT2; FLJ37986;

**Gene ID** 2047

 Tel: 1-631-559-9269 1-516-512-3133

 Email: [info@creative-biomart.com](mailto:info@creative-biomart.com)  Fax: 1-631-938-8127

 45-1 Ramsey Road, Shirley, NY 11967, USA

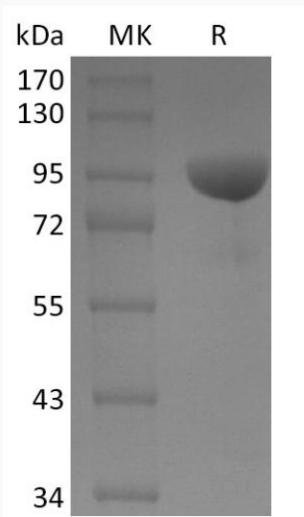
mRNA Refseq [NM\\_004441](#)


Protein Refseq [NP\\_004432](#)

MIM [600600](#)

UniProt ID [P54762](#)

**SDS-PAGE**



 Tel: 1-631-559-9269 1-516-512-3133

 Email: [info@creative-biomart.com](mailto:info@creative-biomart.com)  Fax: 1-631-938-8127

 45-1 Ramsey Road, Shirley, NY 11967, USA