

## Recombinant Human EPH Receptor B2, GST-tagged, Active

Cat. No. EPHB2-304H Lot. No. (See product label)

### SPECIFICATION

<b>Product Overview</b>	Recombinant human EPHB2 (570-end) was expressed by baculovirus in <i>Sf9 insect cell</i> using an N-terminal GST tag. MW=66kDa.
<b>Species</b>	Human
<b>Source</b>	Sf9 Cells
<b>Protein Length</b>	570-end a.a.
<b>Description</b>	EPHB2 is a member of the Eph family of receptor tyrosine kinases that mediate neurodevelopmental processes such as boundary formation, axon guidance, vasculogenesis, and cell migration. EPHB2 has been shown to associate with the non-receptor tyrosine kinase Abl and activated EPHB2 causes tyrosine phosphorylation of Abl and regulates its activity. EPHB2 is overexpressed in a number of tumors particularly glioblastoma and this increases glioma cell migration and invasion.
<b>Sequence</b>	570-end.
<b>Applications</b>	Kinase Assay, Western Blot.
<b>Storage And Stability</b>	Store product at $-70^{\circ}\text{C}$ . For optimal storage, aliquot target into smaller quantities after centrifugation and store at recommended temperature. For most favorable performance, avoid repeated handling and multiple freeze/thaw cycles.

 Tel: 1-631-559-9269 1-516-512-3133

 Email: [info@creative-biomart.com](mailto:info@creative-biomart.com)  Fax: 1-631-938-8127

 45-1 Ramsey Road, Shirley, NY 11967, USA

## GENE INFORMATION

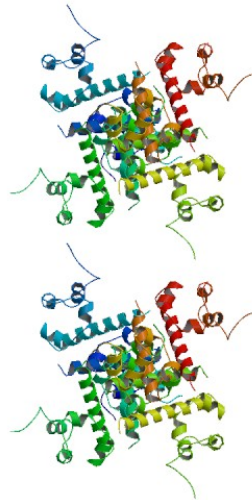
<b>Gene Name</b>	EPHB2 EPH receptor B2 [ Homo sapiens ]
<b>Synonyms</b>	EPHB2; EPH receptor B2; DRT; ERK; CAPB; Hek5; PCBC; EPHT3; Tyro5; MGC87492; EphB2; eph tyrosine kinase 3; ephrin type-B receptor 2; elk-related tyrosine kinase; protein-tyrosine kinase HEK5; EC 2.7.10.1; EPTH3; TYRO5; OTTHUMP00000002914; OTTHUMP00000002916; Receptor protein-tyrosine kinase HEK5; Renal carcinoma antigen NY-REN-47; Tyrosine-protein kinase TYRO5; Tyrosine-protein kinase receptor EPH-3; developmentally-regulated eph-related tyrosine kinase; eph tyrosine kinase 3; ephrin receptor EphB2
<b>Gene ID</b>	2048
<b>mRNA Refseq</b>	NM_004442
<b>Protein Refseq</b>	NP_004433
<b>MIM</b>	600997
<b>UniProt ID</b>	P29323
<b>Chromosome Location</b>	1p36.1-p35
<b>Pathway</b>	Axon guidance
<b>Function</b>	ATP binding; axon guidance receptor activity; nucleotide binding; receptor activity; receptor binding; transferase activity; transmembrane-ephrin receptor activity

 Tel: 1-631-559-9269 1-516-512-3133

 Email: [info@creative-biomart.com](mailto:info@creative-biomart.com)  Fax: 1-631-938-8127

 45-1 Ramsey Road, Shirley, NY 11967, USA

PDB rendering based  
on 1b4f



 Tel: 1-631-559-9269 1-516-512-3133

 Email: [info@creative-biomart.com](mailto:info@creative-biomart.com)  Fax: 1-631-938-8127

 45-1 Ramsey Road, Shirley, NY 11967, USA