

Active Recombinant Human EphB6 protein, His-tagged

Cat. No. EPHB6-3152H Lot. No. (See product label)

SPECIFICATION

Product Overview	Active Recombinant Human EphB6 protein(Met 1-Ser 579)(NP_004436.1) precursor was expressed in HEK293, fused with a polyhistidine tag at the C-terminus.
Species	Human
Source	HEK293
ProteinLength	1-579 aa
Form	Lyophilized from sterile PBS, pH 7.4.
Bio-activity	1. Measured by its binding ability in a functional ELISA. Immobilized recombinant human EphB6 at 10 µg/ml (100 µl/well) can bind human EphrinB1 with a linear range of 32-800 ng/ml. 2. Immobilized recombinant human EphB6 at 10 µg/ml (100 µl/well) can bind human EphrinB2 with a linear range of 1.28-32 ng/ml.
Molecular Mass	The secreted recombinant human EphB6 consists of 574 amino acids and has a calculated molecular mass of 61.6 kDa. In SDS-PAGE under reducing conditions, the apparent molecular mass of rhEphB6 is approximately 60-70 kDa due to glycosylation.
Endotoxin	< 1 EU/g as determined by LAL test.
Purity	> 92 % as determined by SDS-PAGE

 Tel: 1-631-559-9269 1-516-512-3133

 Email: info@creative-biomart.com  Fax: 1-631-938-8127

 45-1 Ramsey Road, Shirley, NY 11967, USA

Storage Store it under sterile conditions at -20°C to -80°C upon receiving. Recommend to aliquot the protein into smaller quantities for optimal storage. Avoid repeated freeze-thaw cycles.

Reconstitution It is recommended that sterile water be added to the vial to prepare a stock solution of 0.2 ug/ul. Centrifuge the vial at 4°C before opening to recover the entire contents.

GENE INFORMATION

Gene Name EPHB6 EPH receptor B6 [Homo sapiens]

Official Symbol EPHB6

Synonyms EPHB6; EPH receptor B6; EphB6; ephrin type-B receptor 6; HEP; tyrosine-protein kinase-defective receptor EPH-6; MGC129910; MGC129911;

Gene ID 2051

mRNA Refseq NM_004445

Protein Refseq NP_004436

MIM 602757

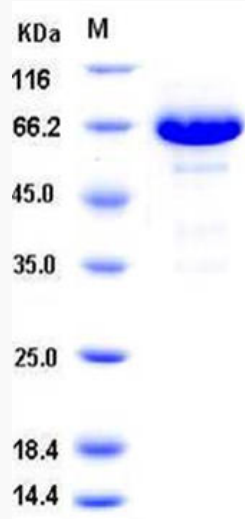
UniProt ID O15197

 Tel: 1-631-559-9269 1-516-512-3133

 Email: info@creative-biomart.com  Fax: 1-631-938-8127

 45-1 Ramsey Road, Shirley, NY 11967, USA

SDS-PAGE



 Tel: 1-631-559-9269 1-516-512-3133

 Email: info@creative-biomart.com  Fax: 1-631-938-8127

 45-1 Ramsey Road, Shirley, NY 11967, USA