

Recombinant Human EPHB6 Protein, GST-tagged

Cat. No. EPHB6-3406H Lot. No. (See product label)

SPECIFICATION

Product Overview	Human EPHB6 partial ORF (NP_004436, 23 a.a. - 122 a.a.) recombinant protein with GST-tag at N-terminal.
Species	Human
Source	Wheat Germ
Description	This gene encodes a member of a family of transmembrane proteins that function as receptors for ephrin-B family proteins. Unlike other members of this family, the encoded protein does not contain a functional kinase domain. Activity of this protein can influence cell adhesion and migration. Expression of this gene is downregulated during tumor progression, suggesting that the protein may suppress tumor invasion and metastasis. Alternative splicing results in multiple transcript variants. [provided by RefSeq, Jul 2013]
Molecular Mass	36.63 kDa
AA Sequence	DTTGETSEIGWLTYPPGGWDEVSVLDDQRRRLTRTFEACHVAGAPPGTGQDNWLQTHFVERRGAQRAHIRLHFSVRACSSLGVSGGTCRETFTLYYRQAE
Applications	Enzyme-linked Immunoabsorbent Assay Western Blot (Recombinant protein) Antibody Production Protein Array

 Tel: 1-631-559-9269 1-516-512-3133

 Email: info@creative-biomart.com  Fax: 1-631-938-8127

 45-1 Ramsey Road, Shirley, NY 11967, USA



Notes	Best use within three months from the date of receipt of this protein.
Storage	Store at -80 centigrade. Aliquot to avoid repeated freezing and thawing.
Storage Buffer	50 mM Tris-HCl, 10 mM reduced Glutathione, pH=8.0 in the elution buffer.

GENE INFORMATION

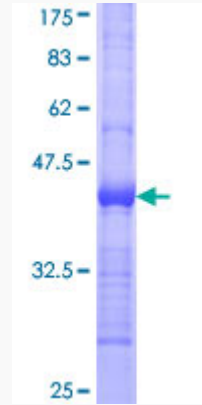
Gene Name	EPHB6 EPH receptor B6 [Homo sapiens]
Official Symbol	EPHB6
Synonyms	EPHB6; EPH receptor B6; EphB6; ephrin type-B receptor 6; HEP; tyrosine-protein kinase-defective receptor EPH-6; MGC129910; MGC129911;
Gene ID	2051
mRNA Refseq	NM_004445
Protein Refseq	NP_004436
MIM	602757
UniProt ID	O15197

 Tel: 1-631-559-9269 1-516-512-3133

 Email: info@creative-biomart.com  Fax: 1-631-938-8127

 45-1 Ramsey Road, Shirley, NY 11967, USA

**Quality Control
Testing**



12.5% SDS-PAGE Stained with Coomassie Blue.

 Tel: 1-631-559-9269 1-516-512-3133

 Email: info@creative-biomart.com  Fax: 1-631-938-8127

 45-1 Ramsey Road, Shirley, NY 11967, USA