

## Active Recombinant Human EphB6 protein, Fc-tagged

Cat. No. EPHB6-40H Lot. No. (See product label)

### SPECIFICATION

**Product Overview** Active Recombinant Human EphB6 protein(Met 1-Ser 579)(NP\_004436.1) precursor was expressed in HEK293, fused with the Fc region of human IgG1 at the C-terminus.

**Species** Human

**Source** HEK293

**ProteinLength** 1-579 aa

**Form** Lyophilized from sterile PBS, pH 7.4.

**Bio-activity** 1. Measured by its binding ability in a functional ELISA. Immobilized recombinant human EphrinB1 at 10 µg/ml (100 µl/well) can bind human EphB6 with a linear range of 0.16-4 µg/ml. 2. Immobilized recombinant human EphrinB2 at 10 µg/ml (100 µl/well) can bind human EphB6 with a linear range of 1.28-32 ng/ml.

**Molecular Mass** The recombinant mature human EphB6/Fc chimera is a disulfide linked homodimeric protein. Each monomer consists of 801 amino acids and has a calculated molecular mass of 86.5 kDa. In SDS-PAGE under reducing conditions, rhEphB6/Fc monomer migrates with an apparent molecular mass of approximately 100-110 kDa due to glycosylation.

**Endotoxin** < 1 EU/g as determined by LAL test.

 Tel: 1-631-559-9269 1-516-512-3133

 Email: [info@creative-biomart.com](mailto:info@creative-biomart.com)  Fax: 1-631-938-8127

 45-1 Ramsey Road, Shirley, NY 11967, USA

<b>Purity</b>	> 90 % as determined by SDS-PAGE
<b>Storage</b>	Store it under sterile conditions at -20°C to -80°C upon receiving. Recommend to aliquot the protein into smaller quantities for optimal storage. Avoid repeated freeze-thaw cycles.
<b>Reconstitution</b>	It is recommended that sterile water be added to the vial to prepare a stock solution of 0.2 ug/ul. Centrifuge the vial at 4°C before opening to recover the entire contents.

## GENE INFORMATION

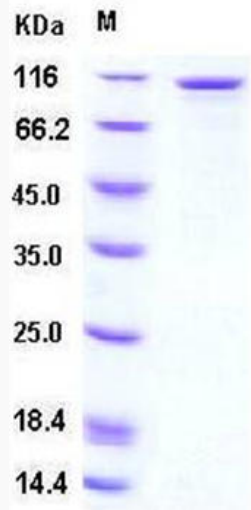
<b>Gene Name</b>	EPHB6 EPH receptor B6 [ Homo sapiens ]
<b>Official Symbol</b>	EPHB6
<b>Synonyms</b>	EPHB6; EPH receptor B6; EphB6; ephrin type-B receptor 6; HEP; tyrosine-protein kinase-defective receptor EPH-6; MGC129910; MGC129911;
<b>Gene ID</b>	2051
<b>mRNA Refseq</b>	NM_004445
<b>Protein Refseq</b>	NP_004436
<b>MIM</b>	602757
<b>UniProt ID</b>	O15197

 Tel: 1-631-559-9269 1-516-512-3133

 Email: [info@creative-biomart.com](mailto:info@creative-biomart.com)  Fax: 1-631-938-8127

 45-1 Ramsey Road, Shirley, NY 11967, USA

**SDS-PAGE**



 Tel: 1-631-559-9269 1-516-512-3133

 Email: [info@creative-biomart.com](mailto:info@creative-biomart.com)  Fax: 1-631-938-8127

 45-1 Ramsey Road, Shirley, NY 11967, USA