

Active Recombinant Human EPHB6 protein

Cat. No. EPHB6-698H Lot. No. (See product label)

SPECIFICATION

Product Overview	Active Recombinant Human EPHB6 protein(NP_004436.1)(Met 1-Ser 579) with quinary-aa peptide (DDDDK) at the C-terminus was expressed and purified in HEK293.
Species	Human
Source	HEK293
ProteinLength	1-579 aa
Form	Lyophilized from sterile 100mM NaCl, 50mM Tris, pH 7.5.
Bio-activity	Measured by its binding ability in a functional ELISA. Immobilized human EphB6 at 10 µg/mL (100 µl/well) can bind biotinylated human EFNB2-Fch with a linear range of 1.56-50 ng/mL.
Molecular Mass	The recombinant mature human EphB6 consists of 569 amino acids and has a calculated molecular mass of 60.4 kDa. In SDS-PAGE under reducing conditions, the apparent molecular mass of rhEphB6 is approximately 72 kDa due to glycosylation.
Endotoxin	< 1 EU/g as determined by LAL test.
Purity	> 95 % as determined by SDS-PAGE and SEC-HPLC Analysis.
Storage	Store it under sterile conditions at -20°C to -80°C upon receiving. Recommend to

 Tel: 1-631-559-9269 1-516-512-3133

 Email: info@creative-biomart.com  Fax: 1-631-938-8127

 45-1 Ramsey Road, Shirley, NY 11967, USA

aliquot the protein into smaller quantities for optimal storage. Avoid repeated freeze-thaw cycles.

Reconstitution

It is recommended that sterile water be added to the vial to prepare a stock solution of 0.2 ug/ul. Centrifuge the vial at 4°C before opening to recover the entire contents.

GENE INFORMATION**Gene Name**

EPHB6 EPH receptor B6 [Homo sapiens]

Official Symbol

EPHB6

Synonyms

EPHB6; EPH receptor B6; EphB6; ephrin type-B receptor 6; HEP; tyrosine-protein kinase-defective receptor EPH-6; MGC129910; MGC129911;

Gene ID

2051

mRNA Refseq

NM_004445

Protein Refseq

NP_004436

MIM

602757

UniProt ID

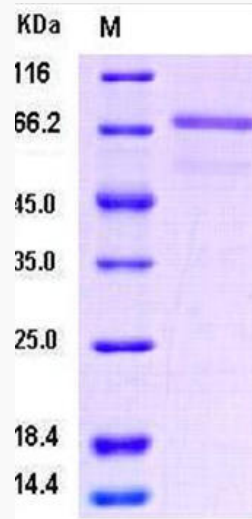
O15197

 Tel: 1-631-559-9269 1-516-512-3133

 Email: info@creative-biomart.com  Fax: 1-631-938-8127

 45-1 Ramsey Road, Shirley, NY 11967, USA

SDS-PAGE



 Tel: 1-631-559-9269 1-516-512-3133

 Email: info@creative-biomart.com  Fax: 1-631-938-8127

 45-1 Ramsey Road, Shirley, NY 11967, USA