

# Recombinant Human EPHX2 Protein, MYC/DDK-tagged, C13 and N15-labeled

Cat. No. EPHX2-297H Lot. No. (See product label)

## SPECIFICATION

<b>Product Overview</b>	EPHX2 MS Standard C13 and N15-labeled recombinant protein (NP_001970) with a C-terminal MYC/DDK tag, was expressed in HEK293 cells.
<b>Species</b>	Human
<b>Source</b>	HEK293
<b>Description</b>	This gene encodes a member of the epoxide hydrolase family. The protein, found in both the cytosol and peroxisomes, binds to specific epoxides and converts them to the corresponding dihydrodiols. Mutations in this gene have been associated with familial hypercholesterolemia. Alternatively spliced transcript variants have been described. [provided by RefSeq, Feb 2012]
<b>Molecular Mass</b>	62.6 kDa
<b>AA Sequence</b>	<p>MTLRAAVFDLDGVLALPAVFGVLGRTEEALALPRGLLNDAFQKGGPEGATTRLMKG  EITLSQWIPLMEENCRKCSETAKVCLPKNFSIKEIFDKAISARKINRMLQAALMLRKK  GFTTAILTNTWLDDRAERDGLAQLMCELKMHFDLIESCQVGMVKPEPQIYKFLD  LTKASPSEVVFLDDIGANLKPARDLGMVTILVQDQDTALKELEKVTGIQLLNTAPLPTS  CNPSDMSHGYVTVKPRVRLHFVELGSGPAVCLCHGFPESWYSWRYQIPALAQAGY  RVLAMDMKGYGESSAPPEIEEYCMVLCCKEMVTFDLKGLSQAVFIGHDWGGMLV  WYMAFYPERVRAVASLNTPFIPANPNMSPLESIKANPVFDYQLYFQEPGVAEAELE  QNLRSRTFKSLFRASDESVLSMHKVCEAGGLFVNSPEEPSLSRMVTEEEIQFYVQQF</p>

 Tel: 1-631-559-9269 1-516-512-3133

 Email: [info@creative-biomart.com](mailto:info@creative-biomart.com)  Fax: 1-631-938-8127

 45-1 Ramsey Road, Shirley, NY 11967, USA



KKSGFRGPLNWYRNMERNWKWACKSLGRKILIPALMVTAEKDFVLVPQMSQHMED  
WIPHLKRGHIEDCGHWTQMDKPTEVNLQILIKWLDSARNPPVVSKMTRTRPLEQKLI  
SEEDLAANDILDYKDDDDKV

**Purity** > 80% as determined by SDS-PAGE and Coomassie blue staining

**Stability** Stable for 3 months from receipt of products under proper storage and handling conditions.

**Storage** Store at -80 centigrade. Avoid repeated freeze-thaw cycles.

**Concentration** 50 µg/mL as determined by BCA

**Storage Buffer** 100 mM glycine, 25 mM Tris-HCl, pH 7.3.

## GENE INFORMATION

**Gene Name** EPHX2 epoxide hydrolase 2, cytoplasmic [ Homo sapiens (human) ]

**Official Symbol** EPHX2

**Synonyms** EPHX2; epoxide hydrolase 2, cytoplasmic; epoxide hydrolase 2; epoxide hydratase; epoxide hydrolase, soluble; epoxide hydrolase 2, cytosolic; CEH; SEH;

**Gene ID** 2053

**mRNA Refseq** NM\_001979

**Protein Refseq** NP\_001970

**MIM** 132811

Tel: 1-631-559-9269 1-516-512-3133

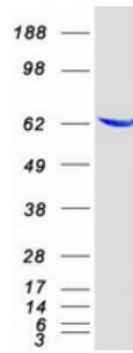
Email: [info@creative-biomart.com](mailto:info@creative-biomart.com) Fax: 1-631-938-8127

45-1 Ramsey Road, Shirley, NY 11967, USA

UniProt ID

P34913

SDS-PAGE



 Tel: 1-631-559-9269 1-516-512-3133

 Email: [info@creative-biomart.com](mailto:info@creative-biomart.com)  Fax: 1-631-938-8127

 45-1 Ramsey Road, Shirley, NY 11967, USA