

## Recombinant Human EPHX2 Protein, GST-tagged

Cat. No. EPHX2-3409H Lot. No. (See product label)

### SPECIFICATION

<b>Product Overview</b>	Human EPHX2 full-length ORF ( NP_001970.2, 1 a.a. - 555 a.a.) recombinant protein with GST-tag at N-terminal.
<b>Species</b>	Human
<b>Source</b>	Wheat Germ
<b>Description</b>	This gene encodes a member of the epoxide hydrolase family. The protein, found in both the cytosol and peroxisomes, binds to specific epoxides and converts them to the corresponding dihydrodiols. Mutations in this gene have been associated with familial hypercholesterolemia. Alternatively spliced transcript variants have been described. [provided by RefSeq, Feb 2012]
<b>Molecular Mass</b>	89 kDa
<b>AA Sequence</b>	<p>MTLRAAVFDLDGVLALPAVFGVLRTEEALALPRGLLNDAFQKGGPEGATTRLMKG  EITLSQWIPLMEENCRKCSSETAKVCLPKNFSIKEIFDKAISARKINRPMQLQAALMLRKK  GFTTAILTNTWLDDRAERDGLAQLMCELKMHFDLIESCQVGMVKPEPQIYKFLD  LKASPSEVVFLDDIGANLKPARDLGMVTILVQDQDTALKELEKVTGIQLLNTPLPLPTS  CNPSDMSHGYVTVKPRVRLHFVELGSGPAVCLCHGFPESWYSWRYQIPALAQAGY  RVLAMDMKGYGESSAPPEIEEYCMVELCKEMVTFLDKLGLSQAVFIGHDWGGMLV  WYMALFYPERVRAVASLNTPFIPANPNMSPLESIKANPVFDYQLYFQEPGVAEAELE  QNLSRTFKSLFRASDESVLSMHKVCEAGGLFVNSPEEPSLSRMVTEEEIQFYVQQF  KKSGFRGPLNWYRNMERNWKWACKSLGRKILIPALMVTAEKDFVLVPQMSQHMED</p>

 Tel: 1-631-559-9269 1-516-512-3133

 Email: [info@creative-biomart.com](mailto:info@creative-biomart.com)  Fax: 1-631-938-8127

 45-1 Ramsey Road, Shirley, NY 11967, USA

WIPHLKRGHIEDCGHWTQMDKPTEVNLQILIKWLSDARNPPVVSKM

**Applications**

Enzyme-linked Immunoabsorbent Assay  
 Western Blot (Recombinant protein)  
 Antibody Production  
 Protein Array

**Notes**

Best use within three months from the date of receipt of this protein.

**Storage**

Store at -80 centigrade. Aliquot to avoid repeated freezing and thawing.

**Storage Buffer**

50 mM Tris-HCl, 10 mM reduced Glutathione, pH=8.0 in the elution buffer.

## GENE INFORMATION

**Gene Name**

EPHX2 epoxide hydrolase 2, cytoplasmic [ Homo sapiens ]

**Official Symbol**

EPHX2

**Synonyms**

EPHX2; epoxide hydrolase 2, cytoplasmic; epoxide hydrolase 2; epoxide hydratase;  
 epoxide hydrolase, soluble; epoxide hydrolase 2, cytosolic; CEH; SEH;

**Gene ID**

2053

**mRNA Refseq**

NM\_001256482

**Protein Refseq**

NP\_001243411

**MIM**

132811

**UniProt ID**

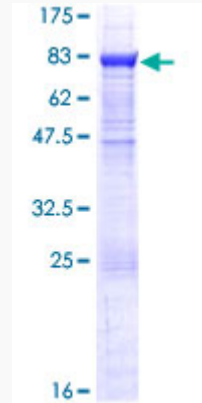
P34913

 Tel: 1-631-559-9269 1-516-512-3133

 Email: [info@creative-biomart.com](mailto:info@creative-biomart.com)  Fax: 1-631-938-8127

 45-1 Ramsey Road, Shirley, NY 11967, USA

**Quality Control  
Testing**



12.5% SDS-PAGE Stained with Coomassie Blue.

 Tel: 1-631-559-9269 1-516-512-3133

 Email: [info@creative-biomart.com](mailto:info@creative-biomart.com)  Fax: 1-631-938-8127

 45-1 Ramsey Road, Shirley, NY 11967, USA