

Recombinant Human EPHX2 Protein, His-tagged

Cat. No. EPHX2-34H Lot. No. (See product label)

SPECIFICATION

Product Overview	Recombinant human EPHX2(2-555) protein with a N-terminal His-tag was expressed in Sf21 cells.
Species	Human
Source	Insect Cells
ProteinLength	2-555
Description	This gene encodes a member of the epoxide hydrolase family. The protein, found in both the cytosol and peroxisomes, binds to specific epoxides and converts them to the corresponding dihydrodiols. Mutations in this gene have been associated with familial hypercholesterolemia. Alternatively spliced transcript variants have been described.
Molecular Mass	64 kDa
Purity	≥95% estimated by SDS-PAGE
Unit Definition	One unit hydrolyzes 1 nmol/min of PHOME at 37 centigrade in. Detected by fluorescence of product; Ex. 330 nm, Em. 465 nm and measured against a standard curve of 6-methoxy-2-naphthaldehyde.
Stability	≥ 2 years

 Tel: 1-631-559-9269 1-516-512-3133

 Email: info@creative-biomart.com  Fax: 1-631-938-8127

 45-1 Ramsey Road, Shirley, NY 11967, USA

Storage Store it at -80 centigrade

GENE INFORMATION

Gene Name EPHX2 epoxide hydrolase 2 [Homo sapiens (human)]

Official Symbol EPHX2

Synonyms EPHX2; epoxide hydrolase 2; CEH; SEH; ABHD20; bifunctional epoxide hydrolase 2; epoxide hydratase; epoxide hydrolase 2, cytoplasmic; epoxide hydrolase 2, cytosolic; epoxide hydrolase, soluble

Gene ID 2053

mRNA Refseq NM_001256482

Protein Refseq NP_001243411

MIM 132811

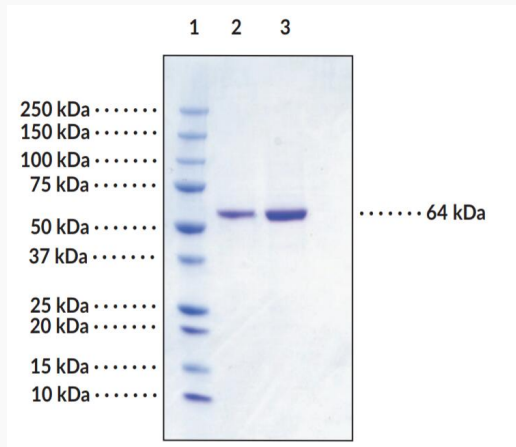
UniProt ID P34913

 Tel: 1-631-559-9269 1-516-512-3133

 Email: info@creative-biomart.com  Fax: 1-631-938-8127

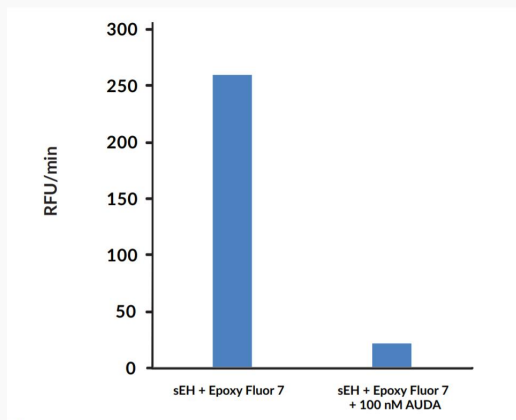
 45-1 Ramsey Road, Shirley, NY 11967, USA

**SDS-PAGE Analysis
of EPHX2**



Lane 1: MW Markers; Lane 2: Soluble Epoxide Hydrolase (2 µg); Lane 3: Soluble Epoxide Hydrolase (4 µg). Representative gel image shown; actual purity may vary between each batch.

**Inhibition of sEH by
AUDA**



Data generated using protocols from Soluble Epoxide Hydrolase Inhibitor Screening Assay Kit.

Tel: 1-631-559-9269 1-516-512-3133

Email: info@creative-biomart.com Fax: 1-631-938-8127

45-1 Ramsey Road, Shirley, NY 11967, USA