

Recombinant Human EPHX2 Protein (1-555 aa), His-SUMO-tagged

Cat. No. EPHX2-483H **Lot. No.** (See product label)

SPECIFICATION

Product Overview	Recombinant Human EPHX2 Protein (1-555 aa) is produced by E. coli expression system. This protein is fused with a 6xHis-SUMO tag at the N-terminal. Research Area: Cancer. Protein Description: Full Length.
Species	Human
Source	E.coli
ProteinLength	1-555 aa
Description	Bifunctional enzyme. The C-terminal domain has epoxide hydrolase activity and acts on epoxides (alkene oxides, oxiranes) and arene oxides. Plays a role in xenobiotic metabolism by degrading potentially toxic epoxides. Also determines steady-state levels of physiological mediators. The N-terminal domain has lipid phosphatase activity, with the highest activity towards threo-9,10-phosphonoxy-hydroxy-octadecanoic acid, followed by erythro-9,10-phosphonoxy-hydroxy-octadecanoic acid, 12-phosphonoxy-octadec-9Z-enoic acid, 12-phosphonoxy-octadec-9E-enoic acid, and p-nitrophenyl phosphate.
Form	Tris-based buffer, 50% glycerol
Molecular Mass	78.6 kDa
AA Sequence	MTLRAAVFDLDGVLALPAVFGVLRTEEALALPRGLLNDAFQKGGPEGATTRLMKG

 Tel: 1-631-559-9269 1-516-512-3133

 Email: info@creative-biomart.com  Fax: 1-631-938-8127

 45-1 Ramsey Road, Shirley, NY 11967, USA

EITLSQWIPLMEENCRKCSETAKVCLPKNFSIKEIFDKAISARKINRPMLQAALMLRKK
 GFTTAILTNTWLDDRAERDGLAQLMCELKMHFDLIESCQVGMVKPEPQIYKFLD
 LKASPSEVVFLDDIGANLKPARDLGMVTILVQDQDTALKELEKVTGIQLLNTAPLPTS
 CNPSDMSHGYVTVKPRVRLHFVELGSGPAVCLCHGFPESWYSWRYQIPALAQAGY
 RVLAMDMKGYGESSAPPEIEEYCMVLCCKEMVTFLDKLGLSQAVFIGHDWGGMLV
 WYMALFYPERVRAVASLNTPFIPANPNMSPLESIKANPVFDYQLYFQEPGVAEAELE
 QNLSRTFKSLFRASDESVLSMHKVCEAGGLFVNSPEEPSLSRMVTEEEIQFYVQQF
 KKSGFRGPLNWYRNMERNWKWACKSLGRKILIPALMVTAEKDFVLPQMSQHMED
 WIPHLKRGHIEDCGHWTQMDKPTEVNQILIKWLSDARNPPVVSKM

Purity > 90% as determined by SDS-PAGE.

Notes Repeated freezing and thawing is not recommended. Store working aliquots at 4 centigrade for up to one week.

Storage The shelf life is related to many factors, storage state, buffer ingredients, storage temperature and the stability of the protein itself. Generally, the shelf life of liquid form is 6 months at -20 centigrade/-80 centigrade. The shelf life of lyophilized form is 12 months at -20 centigrade/-80 centigrade.

Concentration A hardcopy of COA with concentration instruction is sent along with the products.

GENE INFORMATION

Gene Name EPHX2 epoxide hydrolase 2, cytoplasmic [Homo sapiens]

Official Symbol EPHX2

Synonyms EPHX2; CEH; SEH;

Gene ID 2053

 Tel: 1-631-559-9269 1-516-512-3133

 Email: info@creative-biomart.com  Fax: 1-631-938-8127

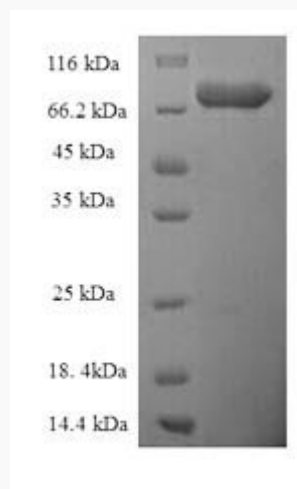
 45-1 Ramsey Road, Shirley, NY 11967, USA

mRNA Refseq [NM_001256482](#)

Protein Refseq [NP_001243411](#)

MIM [132811](#)

UniProt ID [P34913](#)



(Tris-Glycine gel) Discontinuous SDS-PAGE (reduced) with 5% enrichment gel and 15% separation gel.

 Tel: 1-631-559-9269 1-516-512-3133

 Email: info@creative-biomart.com  Fax: 1-631-938-8127

 45-1 Ramsey Road, Shirley, NY 11967, USA