

Recombinant Human EPM2A Protein, GST-tagged

Cat. No. EPM2A-3411H Lot. No. (See product label)

SPECIFICATION

Product Overview	Human EPM2A full-length ORF (AAH70047.1, 1 a.a. - 331 a.a.) recombinant protein with GST-tag at N-terminal.
Species	Human
Source	Wheat Germ
Description	This gene encodes a dual-specificity phosphatase that associates with polyribosomes. The encoded protein may be involved in the regulation of glycogen metabolism. Mutations in this gene have been associated with myoclonic epilepsy of Lafora. Alternative splicing results in multiple transcript variants. [provided by RefSeq, Jul 2008]
Molecular Mass	63.6 kDa
AA Sequence	MRFRFGVVVPPAVAGARPELLVVGSRPELGRWEPRGAVRLRPAGTAAGDGALALQ EPGLWLGEVELAAEEAAQDGAEPGRVDTFWYKFLKREPGGELSWEGNGPHHDC CTYNENNLVDGVYCLPIGHWIEATGHTNEMKHTTDFYFNIAGHQAMHYSRILPNIWL GSCPRQVEHVTIKLGHELGITAVMNFKTEWDIVQNSSGCNRYPEPMTPTDTMIKLYRE EGLAYIWMPPTDMSTEGRVQMLPQAVCLLHALLEKGHIVYVHCNAGVGRSTAAVCG WLQYVMGWNLRKVQYFLMAKRPAVYIDEEALARAQEDFFQKFGKVRSSVCSL
Applications	Enzyme-linked Immunoabsorbent Assay Western Blot (Recombinant protein) Antibody Production

Tel: 1-631-559-9269 1-516-512-3133

Email: info@creative-biomart.com Fax: 1-631-938-8127

45-1 Ramsey Road, Shirley, NY 11967, USA

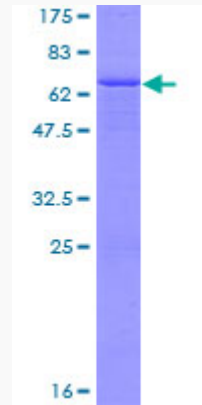
	Protein Array
Notes	Best use within three months from the date of receipt of this protein.
Storage	Store at -80 centigrade. Aliquot to avoid repeated freezing and thawing.
Storage Buffer	50 mM Tris-HCl, 10 mM reduced Glutathione, pH=8.0 in the elution buffer.
GENE INFORMATION	
Gene Name	EPM2A epilepsy, progressive myoclonus type 2A, Lafora disease (laforin) [Homo sapiens]
Official Symbol	EPM2A
Synonyms	EPM2A; epilepsy, progressive myoclonus type 2A, Lafora disease (laforin); epilepsy, progressive myoclonus type 2, Lafora disease (laforin); laforin; LD; LDE; LAFPTPase; lafora PTPase; EPM2; MELF;
Gene ID	7957
mRNA Refseq	NM_001018041
Protein Refseq	NP_001018051
MIM	607566
UniProt ID	B3EWF7

 Tel: 1-631-559-9269 1-516-512-3133

 Email: info@creative-biomart.com  Fax: 1-631-938-8127

 45-1 Ramsey Road, Shirley, NY 11967, USA

**Quality Control
Testing**



12.5% SDS-PAGE Stained with Coomassie Blue.

 Tel: 1-631-559-9269 1-516-512-3133

 Email: info@creative-biomart.com  Fax: 1-631-938-8127

 45-1 Ramsey Road, Shirley, NY 11967, USA