

Recombinant Rhesus monkey EPO Protein, His-tagged

Cat. No. EPO-1432R **Lot. No.** (See product label)

SPECIFICATION

Product Overview	Recombinant Rhesus monkey EPO Protein (Ala28-Arg193) with N-His tag was expressed in E. coli.
Species	Rhesus macaque
Source	E.coli
ProteinLength	Ala28-Arg193
Description	Hormone involved in the regulation of erythrocyte proliferation and differentiation and the maintenance of a physiological level of circulating erythrocyte mass. Binds to EPOR leading to EPOR dimerization and JAK2 activation thereby activating specific downstream effectors, including STAT1 and STAT3.
Form	Freeze-dried powder
Molecular Mass	Predicted Molecular Mass: 22.1 kDa Accurate Molecular Mass: 27 kDa
Purity	> 95%
Applications	Positive Control; Immunogen; SDS-PAGE; WB.
Stability	The thermal stability is described by the loss rate. The loss rate was determined by accelerated thermal degradation test, that is, incubate the protein at 37 centigrade for

 Tel: 1-631-559-9269 1-516-512-3133

 Email: info@creative-biomart.com  Fax: 1-631-938-8127

 45-1 Ramsey Road, Shirley, NY 11967, USA



48h, and no obvious degradation and precipitation were observed. The loss rate is less than 5% within the expiration date under appropriate storage condition.

Storage

Avoid repeated freeze/thaw cycles. Store at 2-8 centigrade for one month. Aliquot and store at -80 centigrade for 12 months.

Storage Buffer

20mM Tris, 150mM NaCl, pH8.0, containing 1mM EDTA, 1mM DTT, 0.01% SKL, 5% Trehalose and Proclin300.

Reconstitution

Reconstitute in 20mM Tris, 150mM NaCl (pH8.0) to a concentration of 0.1-1.0 mg/mL. Do not vortex.

GENE INFORMATION

Gene Name

EPO erythropoietin [*Macaca mulatta* (Rhesus monkey)]

Official Symbol

EPO

Synonyms

EPO; erythropoietin; erythropoietin

Gene ID

719294/

mRNA Refseq

NM_001042736

Protein Refseq

NP_001036201

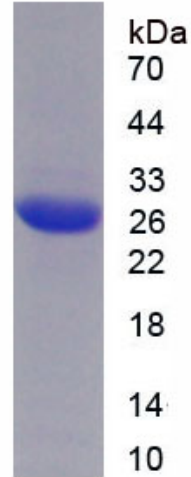
UniProt ID

Q28513

Tel: 1-631-559-9269 1-516-512-3133

Email: info@creative-biomart.com Fax: 1-631-938-8127

45-1 Ramsey Road, Shirley, NY 11967, USA



 Tel: 1-631-559-9269 1-516-512-3133

 Email: info@creative-biomart.com  Fax: 1-631-938-8127

 45-1 Ramsey Road, Shirley, NY 11967, USA