

## Recombinant Human EPO Protein, GST-tagged

**Cat. No.** EPO-3423H    **Lot. No.** (See product label)

### SPECIFICATION

<b>Product Overview</b>	Human EPO full-length ORF ( NP_000790.2, 1 a.a. - 193 a.a.) recombinant protein with GST-tag at N-terminal.
<b>Species</b>	Human
<b>Source</b>	Wheat Germ
<b>Description</b>	<p>This gene encodes a secreted, glycosylated cytokine composed of four alpha helical bundles. The encoded protein is mainly synthesized in the kidney, secreted into the blood plasma, and binds to the erythropoietin receptor to promote red blood cell production, or erythropoiesis, in the bone marrow. Expression of this gene is upregulated under hypoxic conditions, in turn leading to increased erythropoiesis and enhanced oxygen-carrying capacity of the blood. Expression of this gene has also been observed in brain and in the eye, and elevated expression levels have been observed in diabetic retinopathy and ocular hypertension. Recombinant forms of the encoded protein exhibit neuroprotective activity against a variety of potential brain injuries, as well as antiapoptotic functions in several tissue types, and have been used in the treatment of anemia and to enhance the efficacy of cancer therapies. [provided by RefSeq, Aug 2017]</p>
<b>Molecular Mass</b>	47.7 kDa
<b>AA Sequence</b>	<p>MGVHECPAWLWLLLSLLSLPLGLPVLGAPPRLICDSRVLERYLLEAKEAENITGCAE HCSLNENITVPDTKVNIFYAWKRMEVGGQAVEVWQGLALLSEAVLRGQALLVNSSQ</p>

 Tel: 1-631-559-9269    1-516-512-3133

 Email: [info@creative-biomart.com](mailto:info@creative-biomart.com)     Fax: 1-631-938-8127

 45-1 Ramsey Road, Shirley, NY 11967, USA



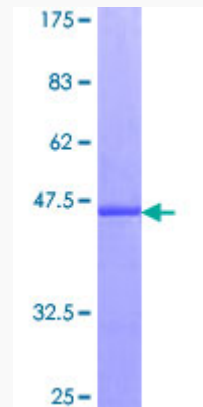
PWEPLQLHVDKAVSGLRSLTLLRALGAQKEAISPPDAASAAPLRTITADTFRKLFVR  
YSNFLRGKCLKLYTGEACRTGDR

<b>Applications</b>	Enzyme-linked Immunoabsorbent Assay Western Blot (Recombinant protein) Antibody Production Protein Array
<b>Notes</b>	Best use within three months from the date of receipt of this protein.
<b>Storage</b>	Store at -80 centigrade. Aliquot to avoid repeated freezing and thawing.
<b>Storage Buffer</b>	50 mM Tris-HCl, 10 mM reduced Glutathione, pH=8.0 in the elution buffer.

## GENE INFORMATION

<b>Gene Name</b>	EPO erythropoietin [ Homo sapiens ]
<b>Official Symbol</b>	EPO
<b>Synonyms</b>	EPO; erythropoietin; EP; epoetin; MVCD2; MGC138142;
<b>Gene ID</b>	2056
<b>mRNA Refseq</b>	NM_000799
<b>Protein Refseq</b>	NP_000790
<b>MIM</b>	133170
<b>UniProt ID</b>	P01588

**Quality Control  
Testing**



12.5% SDS-PAGE Stained with Coomassie Blue.

 Tel: 1-631-559-9269 1-516-512-3133

 Email: [info@creative-biomart.com](mailto:info@creative-biomart.com)  Fax: 1-631-938-8127

 45-1 Ramsey Road, Shirley, NY 11967, USA