

Recombinant Human EPO protein

Cat. No. EPO-513H **Lot. No.** (See product label)

SPECIFICATION

Product Overview	Recombinant Human EPO alpha protein was expressed in CHO.
Species	Human
Source	CHO
ProteinLength	166
Description	Erythropoietin (EPO), a glycoprotein produced primarily by the kidney, is the principal factor that regulates erythropoiesis by stimulating the proliferation and differentiation of erythroid progenitor cells. The production of EPO by kidney cells is increased in response to hypoxia or anemia. Recombinant EPO has been approved for the treatment of anemia associated with chronic renal failure as well as for anemia of AZT treated AIDS patients.
Form	Lyophilized from a 0.2µm filtered concentrated solution in sodium citrate buffer (1 liter of ddH ₂ O containing 5.9 g of sodium citrate, 5.8 g of sodium chloride and 0.06 g of citric acid).
Bio-activity	Fully biologically active when compared to standard. The Specific Activity was measured by the stimulation of reticulocyte production in normocyth-aemic mice and is no less than 1.5 × 10 ⁵ IU/mg.
Molecular Mass	Mature human EPO, containing 166 amino acid residues, has a predicted molecular mass of approximately 21 kDa. As a result of glycosylation, the recombinant protein

 Tel: 1-631-559-9269 1-516-512-3133

 Email: info@creative-biomart.com  Fax: 1-631-938-8127

 45-1 Ramsey Road, Shirley, NY 11967, USA

migrates with an apparent molecular mass of 36-40 kDa in SDS-PAGE.

AA Sequence

APPRLICDSRVLERYLLEAKEAENITTGCAEHCSLNENITVPDTKVNIFYAWKRMEVG
 QQAVEVWQGLALLSEAVLRGQALLVNSSQPWEPLQLHVDKAVSGLRSLTLLRALG
 AQKEAISPPDAASAAPLRITADTFRKLFRVYSNFLRGKCLKLYTGEACRTGDR

Endotoxin

Less than 0.01 EU/μg of rHuEPO-α as determined by LAL method.

Purity

>98% by SDS-PAGE and HPLC analysis.

Storage

Use a manual defrost freezer and avoid repeated freeze-thaw cycles. 12 months from date of receipt, -20 to -70 centigrade as supplied. 1 month, 2 to 8 centigrade under sterile conditions after reconstitution. 3 months, -20 to -70 centigrade under sterile conditions after reconstitution.

Reconstitution

We recommend that this vial be briefly centrifuged prior to opening to bring the contents to the bottom. Reconstitute in sterile distilled water or aqueous buffer containing 0.1 % BSA to a concentration of 0.1-1.0 mg/mL. Stock solutions should be apportioned into working aliquots and stored at ≤-20 centigrade. Further dilutions should be made in appropriate buffered solutions.

GENE INFORMATION

Gene Name

EPO

Official Symbol

EPO

Synonyms

EPO; erythropoietin; EP; epoetin; MVCD2; MGC138142;

Gene ID

2056

 Tel: 1-631-559-9269 1-516-512-3133

 Email: info@creative-biomart.com  Fax: 1-631-938-8127

 45-1 Ramsey Road, Shirley, NY 11967, USA

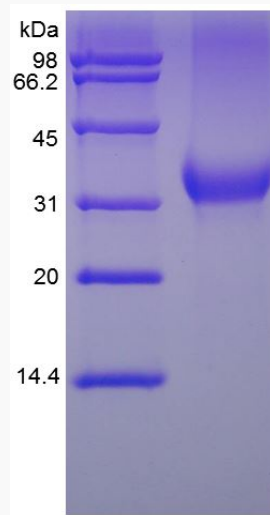
mRNA Refseq [NM_000799](#)

Protein Refseq [NP_000790](#)

MIM [133170](#)

UniProt ID [P01588](#)

SDS-PAGE of EPO-513H



 Tel: 1-631-559-9269 1-516-512-3133

 Email: info@creative-biomart.com  Fax: 1-631-938-8127

 45-1 Ramsey Road, Shirley, NY 11967, USA