

## Recombinant Pig EPO protein, His & GST-tagged

Cat. No. EPO-605P Lot. No. (See product label)

### SPECIFICATION

<b>Product Overview</b>	Recombinant Pig EPO (P49157) aa. (Ala27~Arg194) fused with N-terminal His & GST tag was produced in E. coli cells.
<b>Species</b>	Pig
<b>Source</b>	E.coli
<b>ProteinLength</b>	Ala27~Arg194
<b>Form</b>	Freeze-dried powder
<b>Molecular Mass</b>	Predicted Molecular Mass: 51.0kDa
<b>Endotoxin</b>	<1.0EU per 1g (determined by the LAL method)
<b>Purity</b>	> 95%
<b>Characteristic</b>	The isoelectric point is 6.7.
<b>Applications</b>	SDS-PAGE; WB; ELISA; IP.
<b>Stability</b>	The thermal stability is described by the loss rate. The loss rate was determined by accelerated thermal degradation test, that is, incubate the protein at 37°C for 48h, and no obvious degradation and precipitation were observed. The loss rate is less than 5% within the expiration date under appropriate storage condition.

 Tel: 1-631-559-9269 1-516-512-3133

 Email: [info@creative-biomart.com](mailto:info@creative-biomart.com)  Fax: 1-631-938-8127

 45-1 Ramsey Road, Shirley, NY 11967, USA

<b>Storage</b>	Avoid repeated freeze/thaw cycles. Store at 2-8°C for one month. Aliquot and store at -80°C for 12 months.
----------------	--

<b>Storage buffer</b>	20mM Tris, 500mM NaCl, pH8.0, containing 1mM EDTA, 1mM DTT, 0.01% sarcosyl, 5% trehalose, and preservative.
-----------------------	---

<b>Reconstitution</b>	Reconstitute in sterile PBS, pH7.2-pH7.4
-----------------------	--

## GENE INFORMATION

<b>Gene Name</b>	EPO erythropoietin [ <i>Sus scrofa</i> (pig) ]
------------------	--

<b>Official Symbol</b>	EPO
------------------------	-----

<b>Synonyms</b>	EPO; erythropoietin
-----------------	---------------------

<b>Gene ID</b>	397249
----------------	--------

<b>mRNA Refseq</b>	NM_214134.1
--------------------	-------------

<b>Protein Refseq</b>	NP_999299.1
-----------------------	-------------

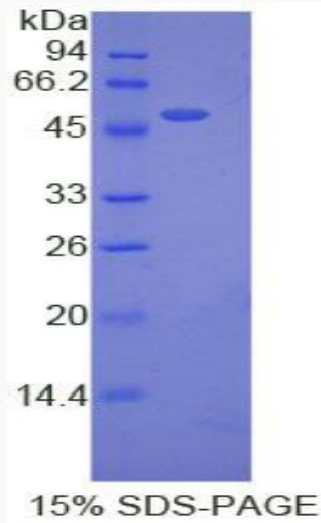
<b>UniProt ID</b>	P49157
-------------------	--------

 Tel: 1-631-559-9269 1-516-512-3133

 Email: [info@creative-biomart.com](mailto:info@creative-biomart.com)  Fax: 1-631-938-8127

 45-1 Ramsey Road, Shirley, NY 11967, USA

SDS-PAGE



 Tel: 1-631-559-9269 1-516-512-3133

 Email: [info@creative-biomart.com](mailto:info@creative-biomart.com)  Fax: 1-631-938-8127

 45-1 Ramsey Road, Shirley, NY 11967, USA