

Recombinant Human EPO protein, Fc-tagged

Cat. No. EPO-97H Lot. No. (See product label)

SPECIFICATION

Product Overview	Recombinant Human EPO alpha protein was expressed in CHO cells with Fc tag.
Species	Human
Source	CHO
Description	Erythropoietin (EPO), a glycoprotein produced primarily by the kidney, is the principal factor that regulates erythropoiesis by stimulating the proliferation and differentiation of erythroid progenitor cells. The production of EPO by kidney cells is increased in response to hypoxia or anemia. Recombinant EPO has been approved for the treatment of anemia associated with chronic renal failure as well as for anemia of AZT treated AIDS patients.
Form	Lyophilized from a 0.2µm filtered concentrated solution in PBS, pH 7.4.
Bio-activity	Fully biologically active when compared to standard. The Specific Activity was measured by the stimulation of reticulocyte production in normocyth-aemic mice and is no less than 5.0×10^5 IU/mg.
Molecular Mass	Recombinant Human EPO/Fc produced in CHO is a dimeric, glycosylated, polypeptide chain consisting of two mature human EPO molecules linked to the Fc portion of human IgG1. The Fc component contains the CH2 domain, the CH3 domain and hinge region, but not the CH1 domain of IgG1. As a result of glycosylation, the recombinant protein migrates with an apparent molecular mass of 140 kDa in non-reducing SDS-PAGE.

 Tel: 1-631-559-9269 1-516-512-3133

 Email: info@creative-biomart.com  Fax: 1-631-938-8127

 45-1 Ramsey Road, Shirley, NY 11967, USA

Endotoxin	Less than 1 EU/μg of rHuEPO-Fc a as determined by LAL method.
Purity	>98% by SDS-PAGE and HPLC analysis.
Storage	Use a manual defrost freezer and avoid repeated freeze-thaw cycles. 12 months from date of receipt, -20 to -70 centigrade as supplied. 1 month, 2 to 8 centigrade under sterile conditions after reconstitution. 3 months, -20 to -70 centigrade under sterile conditions after reconstitution.
Reconstitution	We recommend that this vial be briefly centrifuged prior to opening to bring the contents to the bottom. Reconstitute in sterile distilled water or aqueous buffer containing 0.1 % BSA to a concentration of 0.1-1.0 mg/mL. Stock solutions should be apportioned into working aliquots and stored at ≤-20 centigrade. Further dilutions should be made in appropriate buffered solutions.

GENE INFORMATION

Gene Name	EPO
Official Symbol	EPO
Synonyms	EPO; erythropoietin; EP; epoetin; MVCD2; MGC138142;
Gene ID	2056
mRNA Refseq	NM_000799
Protein Refseq	NP_000790
MIM	133170

 Tel: 1-631-559-9269 1-516-512-3133

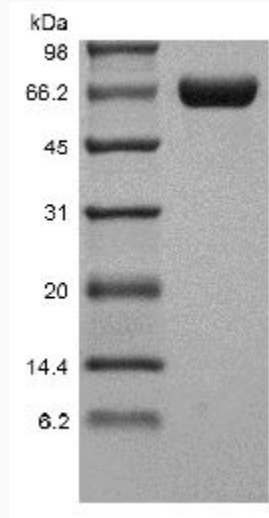
 Email: info@creative-biomart.com  Fax: 1-631-938-8127

 45-1 Ramsey Road, Shirley, NY 11967, USA

UniProt ID

P01588

SDS-PAGE of EPO-97H



 Tel: 1-631-559-9269 1-516-512-3133

 Email: info@creative-biomart.com  Fax: 1-631-938-8127

 45-1 Ramsey Road, Shirley, NY 11967, USA