

Recombinant Human EPOR Protein, GST-tagged

Cat. No. EPOR-3424H Lot. No. (See product label)

SPECIFICATION

Product Overview	Human EPOR full-length ORF (NP_000112.1, 1 a.a. - 508 a.a.) recombinant protein with GST-tag at N-terminal.
Species	Human
Source	Wheat Germ
Description	<p>This gene encodes the erythropoietin receptor which is a member of the cytokine receptor family. Upon erythropoietin binding, this receptor activates Jak2 tyrosine kinase which activates different intracellular pathways including: Ras/MAP kinase, phosphatidylinositol 3-kinase and STAT transcription factors. The stimulated erythropoietin receptor appears to have a role in erythroid cell survival. Defects in the erythropoietin receptor may produce erythroleukemia and familial erythrocytosis. Dysregulation of this gene may affect the growth of certain tumors. Alternate splicing results in multiple transcript variants.[provided by RefSeq, May 2010]</p>
Molecular Mass	81.5 kDa
AA Sequence	<p>MDHLGASLWPQVGSLLCLLLAGAAWAPPPNLPDPKFESKAALLAARGPEELLCFTER LEDLVCFWEEAASAGVGPNGYSFSYQLEDEPWKLCRLHQAPTARGAVRFWCSLPT ADTSSFVPLELRVTAASGAPRYHRVIHINEVLLDAPVGLVARLADESGHVLRWLP PPETPMTSHIRYEVDVSAGNGAGSVQRVEILEGRTECVLSNLRGRTRYTFVRARM AEPSFGGFWSAWSEPVSLTSPDLPLILTLILVVILVLLTVLALLSHRRALKQKIWP GIPSESEFEGLFTTHKGNFQLWLYQNDGCLWWSPCTPFTEDPPASLEVLSERCW</p>

 Tel: 1-631-559-9269 1-516-512-3133

 Email: info@creative-biomart.com  Fax: 1-631-938-8127

 45-1 Ramsey Road, Shirley, NY 11967, USA

GTMQAVEPGTDDDEGPLLEPVGSEHAQDTYLVLDKWLLPRNPPSEDLPGGGSVDIV
 AMDEGSEASSCSSALASKPSPEGASAASFEYTILDPSSQLLRPWTLCPPELPPPHL
 KYLYLVVSDSGISTDYSSGDSQGAQGGLSGDPYSNPYENSLIPAAEPLPPSYVACS

Applications	Enzyme-linked Immunoabsorbent Assay Western Blot (Recombinant protein) Antibody Production Protein Array
Notes	Best use within three months from the date of receipt of this protein.
Storage	Store at -80 centigrade. Aliquot to avoid repeated freezing and thawing.
Storage Buffer	50 mM Tris-HCl, 10 mM reduced Glutathione, pH=8.0 in the elution buffer.

GENE INFORMATION

Gene Name	EPOR erythropoietin receptor [Homo sapiens]
Official Symbol	EPOR
Synonyms	EPOR; erythropoietin receptor; EPO-R; MGC138358;
Gene ID	2057
mRNA Refseq	NM_000121
Protein Refseq	NP_000112
MIM	133171

 Tel: 1-631-559-9269 1-516-512-3133

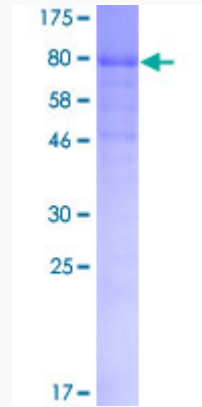
 Email: info@creative-biomart.com  Fax: 1-631-938-8127

 45-1 Ramsey Road, Shirley, NY 11967, USA

UniProt ID

P19235

Quality Control
Testing



12.5% SDS-PAGE Stained with Coomassie Blue.

 Tel: 1-631-559-9269 1-516-512-3133

 Email: info@creative-biomart.com  Fax: 1-631-938-8127

 45-1 Ramsey Road, Shirley, NY 11967, USA