

## Active Recombinant Human EPOR protein, His-tagged

Cat. No. EPOR-3851H Lot. No. (See product label)

### SPECIFICATION

<b>Product Overview</b>	Active Recombinant Human EPOR protein(Met 1-Pro 250)(NP_000112.1) was expressed in HEK293, fused with a polyhistidine tag at the C-terminus.
<b>Species</b>	Human
<b>Source</b>	HEK293
<b>ProteinLength</b>	1-250 aa
<b>Form</b>	Lyophilized from sterile PBS, pH 7.4.
<b>Bio-activity</b>	Measured by its ability to inhibit EPOdependent proliferation of TF-1 human erythroleukemic cells. The ED50 for this effect is typically 15-60 ng/mL in the presence of 0.1 U/mL Recombinant Human EPO.
<b>Molecular Mass</b>	The secreted recombinant human EPOR consists of 237 amino acids and has a predicted molecular mass of 26.3 kDa. In SDS-PAGE under reducing conditions, the apparent molecular mass of rhEPOR is approximately 34 kDa due to glycosylation.
<b>Endotoxin</b>	< 1.0 EU per µg of the protein as determined by the LAL method.
<b>Purity</b>	> 98 % as determined by SDS-PAGE
<b>Storage</b>	Store it under sterile conditions at -20°C to -80°C upon receiving. Recommend to aliquot the protein into smaller quantities for optimal storage. Avoid repeated freeze-

 Tel: 1-631-559-9269 1-516-512-3133

 Email: [info@creative-biomart.com](mailto:info@creative-biomart.com)  Fax: 1-631-938-8127

 45-1 Ramsey Road, Shirley, NY 11967, USA

thaw cycles.

**Reconstitution**

It is recommended that sterile water be added to the vial to prepare a stock solution of 0.2 ug/ul. Centrifuge the vial at 4°C before opening to recover the entire contents.

**GENE INFORMATION**

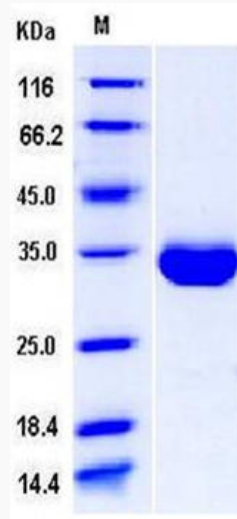
<b>Gene Name</b>	EPOR erythropoietin receptor [ Homo sapiens ]
<b>Official Symbol</b>	EPOR
<b>Synonyms</b>	EPOR; erythropoietin receptor; EPO-R; MGC138358;
<b>Gene ID</b>	2057
<b>mRNA Refseq</b>	NM_000121
<b>Protein Refseq</b>	NP_000112
<b>MIM</b>	133171
<b>UniProt ID</b>	P19235

 Tel: 1-631-559-9269 1-516-512-3133

 Email: [info@creative-biomart.com](mailto:info@creative-biomart.com)  Fax: 1-631-938-8127

 45-1 Ramsey Road, Shirley, NY 11967, USA

SDS-PAGE



 Tel: 1-631-559-9269 1-516-512-3133

 Email: [info@creative-biomart.com](mailto:info@creative-biomart.com)  Fax: 1-631-938-8127

 45-1 Ramsey Road, Shirley, NY 11967, USA