

# Recombinant Human EPS15 Protein, Myc/DDK-tagged, C13 and N15-labeled

Cat. No. EPS15-2722H Lot. No. (See product label)

## SPECIFICATION

<b>Product Overview</b>	EPS15 MS Standard C13 and N15-labeled recombinant protein (NP_001972) with a C-terminal MYC/DDK tag, was expressed in HEK293 cells.
<b>Species</b>	Human
<b>Source</b>	HEK293
<b>Description</b>	This gene encodes a protein that is part of the EGFR pathway. The protein is present at clatherin-coated pits and is involved in receptor-mediated endocytosis of EGF. Notably, this gene is rearranged with the HRX/ALL/MLL gene in acute myelogenous leukemias. Alternative splicing results in multiple transcript variants encoding distinct isoforms.
<b>Molecular Mass</b>	98.5 kDa
<b>AA Sequence</b>	<p>MAAAAQLSLTQLSSGNPVYEKYYRQVDTGNTGRVLASDAAAFLLKKSGLPDLILGKIW  DLADTDGKGILNKQEFFVALRLVACAQNGLEVSLSSLNLAVPPPRFHDTSSPLLISGT  SAAELPWAVKPEDKAKYDAIFDSLSPVNGFLSGDKVKPVLNLSKLPVDILGRVWELS  DIDHDGMLDRDEFAMFLVYCALEKEPVMSLPPALVPPSKRKTWVVSPEAKAKY  DEIFLKTDKMDGFVSGLEVREIFLKTGLPSTLLAHIWSLCDTKDCGKLSKDQFALAF  HLISQKLIKIDPPHVLTPEMIPPSDRASLQKNIIGSSPVADFSAIKELDTLNNEIVDLQR  EKNNVEQDLKEKEDTIKQRTSEVQDLQDEVQRENTNLQKLQAQKQQVQELLDELDE  QKAQLEEQLKEVRKKCAEEAQLISLKAELTSQESQISTYEEELAKAREELSRLQQET</p>

 Tel: 1-631-559-9269 1-516-512-3133

 Email: [info@creative-biomart.com](mailto:info@creative-biomart.com)  Fax: 1-631-938-8127

 45-1 Ramsey Road, Shirley, NY 11967, USA

AELEESVESGKAQLEPLQQHLQDSQQEISSMQMKLMEMKDLENHNSQLNWCSSPH  
 SILVNGATDYCSLSTSSSETANLNEHVEGQSNLESEPIHQESPARSSPELLPSGVTD  
 ENEVTTAVTEKVCSELDNNRHSKEEDPFNVDSSTLTGPVADTNLDDFFQSDPFVGS  
 PFKDDPFGKIDPFGGDPFKGSDPFASDCFFRQSTDPFATSSTDPFSAANNSSITSVE  
 TLKHNDPFAPGGTVVAASDSATDPFASVFGNESFGGGFADFSTLSKVNNEPFRSA  
 TSSSVSNVVITKNVFEETSVKSEDEPPALPPKIGTPTRPCPLPPGKRSINKLDSPDPF  
 KLNDPFQPFPGNDSPKEKDPEIFCDPFTSATTTTNKEADPSNFANFSAYPSEEDMIE  
 WAKRESEREEQRLARLNQQEQEDLELAIALSKSEISEATRTRPLEQKLISEEDLAAN  
 DILDYKDDDDKV

**Purity** > 80% as determined by SDS-PAGE and Coomassie blue staining

**Stability** Stable for 3 months from receipt of products under proper storage and handling conditions.

**Storage** Store at -80 centigrade. Avoid repeated freeze-thaw cycles.

**Concentration** 50 µg/mL as determined by BCA

**Storage Buffer** 100 mM glycine, 25 mM Tris-HCl, pH 7.3.

## GENE INFORMATION

**Gene Name** [EPS15 epidermal growth factor receptor pathway substrate 15 \[ Homo sapiens \(human\) \]](#)

**Official Symbol** [EPS15](#)

**Synonyms** EPS15; epidermal growth factor receptor pathway substrate 15; epidermal growth factor receptor substrate 15; AF 1P; MLLT5; protein AF-1p; ALL1 fused gene from chromosome 1; AF1P; AF-1P;

 Tel: 1-631-559-9269 1-516-512-3133

 Email: [info@creative-biomart.com](mailto:info@creative-biomart.com)  Fax: 1-631-938-8127

 45-1 Ramsey Road, Shirley, NY 11967, USA

**Gene ID** 2060

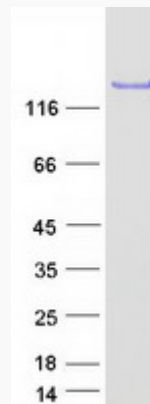
**mRNA Refseq** NM\_001981

**Protein Refseq** NP\_001972

**MIM** 600051

**UniProt ID** P42566

**SDS-PAGE**



 Tel: 1-631-559-9269 1-516-512-3133

 Email: [info@creative-biomart.com](mailto:info@creative-biomart.com)  Fax: 1-631-938-8127

 45-1 Ramsey Road, Shirley, NY 11967, USA