

Recombinant Human EPS15 protein(657-798aa), His-tagged

Cat. No. EPS15-653H Lot. No. (See product label)

SPECIFICATION

Product Overview	Recombinant Human EPS15 protein(P42566)(657-798aa), fused with N-terminal His tag, was expressed in E.coli.
Species	Human
Source	E.coli
ProteinLength	657-798aa
Form	If the delivery form is liquid, the default storage buffer is Tris/PBS-based buffer, 5%-50% glycerol. If the delivery form is lyophilized powder, the buffer before lyophilization is Tris/PBS-based buffer, 6% Trehalose, pH 8.0.
Molecular Mass	20.9 kDa
Purity	Greater than 90% as determined by SDS-PAGE.
Storage	Store at -20°C/-80°C upon receipt, aliquoting is necessary for mutiple use. Avoid repeated freeze-thaw cycles.
Reconstitution	We recommend that this vial be briefly centrifuged prior to opening to bring the contents to the bottom. Please reconstitute protein in deionized sterile water to a concentration of 0.1-1.0 mg/mL. We recommend to add 5-50% of glycerol (final concentration) and aliquot for long-term storage at -20°C/-80°C.

 Tel: 1-631-559-9269 1-516-512-3133

 Email: info@creative-biomart.com  Fax: 1-631-938-8127

 45-1 Ramsey Road, Shirley, NY 11967, USA

AA Sequence CFFRQSTDPFATSSTDPFSAANNSSITSVETLKHNDPFAPGGTVVAASDSATDPFAS
VFGNESFGGGFADFSTLSKVNNEDPFRSATSSSVSNVVITKNVFEETSVKSEDEPPA
LPPKIGTPTRPCPLPPGKRSINKLDSPD

GENE INFORMATION

Gene Name EPS15 epidermal growth factor receptor pathway substrate 15 [Homo sapiens]

Official Symbol EPS15

Synonyms EPS15; epidermal growth factor receptor pathway substrate 15; epidermal growth factor receptor substrate 15; AF 1P; MLLT5; protein AF-1p; ALL1 fused gene from chromosome 1; AF1P; AF-1P;

Gene ID 2060

mRNA Refseq NM_001159969

Protein Refseq NP_001153441

MIM 600051

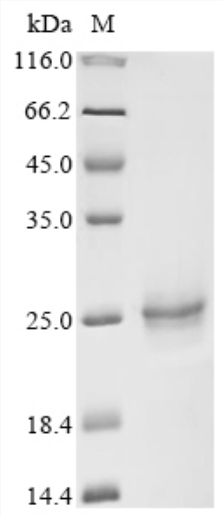
UniProt ID P42566

 Tel: 1-631-559-9269 1-516-512-3133

 Email: info@creative-biomart.com  Fax: 1-631-938-8127

 45-1 Ramsey Road, Shirley, NY 11967, USA

SDS-PAGE



 Tel: 1-631-559-9269 1-516-512-3133

 Email: info@creative-biomart.com  Fax: 1-631-938-8127

 45-1 Ramsey Road, Shirley, NY 11967, USA