

## Recombinant Human EPYC protein, His & T7-tagged

Cat. No. EPYC-1643H Lot. No. (See product label)

### SPECIFICATION

<b>Product Overview</b>	Recombinant Human EPYC aa. (His110~Pro317 (Accession # Q99645)) fused with N-terminal His & T7 tag was produced in E. coli cells.
<b>Species</b>	Human
<b>Source</b>	E.coli
<b>ProteinLength</b>	His110~Pro317
<b>Description</b>	Dermatan sulfate proteoglycan 3 is a member of the small leucine-rich repeat proteoglycan family. This gene is composed of seven exons. It regulates fibrillogenesis by interacting with collagen fibrils and other extracellular matrix proteins.
<b>Form</b>	Freeze-dried powder
<b>Molecular Mass</b>	Predicted Molecular Mass: 28.1kDa
<b>Endotoxin</b>	<1.0EU per 1ug (determined by the LAL method)
<b>Purity</b>	>95%
<b>Applications</b>	SDS-PAGE; WB; ELISA; IP.
<b>Stability</b>	The thermal stability is described by the loss rate. The loss rate was determined by

 Tel: 1-631-559-9269 1-516-512-3133

 Email: [info@creative-biomart.com](mailto:info@creative-biomart.com)  Fax: 1-631-938-8127

 45-1 Ramsey Road, Shirley, NY 11967, USA

accelerated thermal degradation test, that is, incubate the protein at 37°C for 48h, and no obvious degradation and precipitation were observed. The loss rate is less than 5% within the expiration date under appropriate storage condition.

**Storage**

Avoid repeated freeze/thaw cycles. Store at 2-8°C for one month. Aliquot and store at -80°C for 12 months.

**Storage buffer**

Supplied as lyophilized form in PBS, pH7.4, containing 5% sucrose, 0.01% sarcosyl.

**Reconstitution**

Reconstitute in sterile PBS, pH7.2-pH7.4.

**Isoelectric Point**

6.7

## GENE INFORMATION

**Gene Name**

EPYC epiphycan [ *Homo sapiens* (human) ]

**Official Symbol**

EPYC

**Synonyms**

EPYC; epiphycan; PGLB; DSPG3; Pg-Lb; SLRR3B; dermatan sulfate proteoglycan 3; epiphycan proteoglycan; proteoglycan-lb; small chondroitin/dermatan sulfate proteoglycan

**Gene ID**

1833

**mRNA Refseq**

NM\_004950.4

**Protein Refseq**

NP\_004941.2

**UniProt ID**

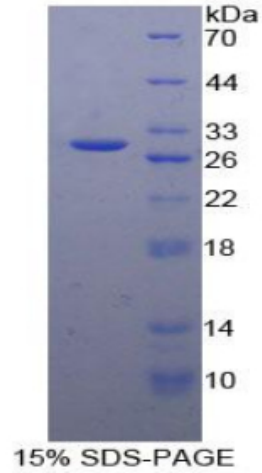
Q99645

 Tel: 1-631-559-9269 1-516-512-3133

 Email: [info@creative-biomart.com](mailto:info@creative-biomart.com)  Fax: 1-631-938-8127

 45-1 Ramsey Road, Shirley, NY 11967, USA

**SDS-PAGE**



 Tel: 1-631-559-9269 1-516-512-3133

 Email: [info@creative-biomart.com](mailto:info@creative-biomart.com)  Fax: 1-631-938-8127

 45-1 Ramsey Road, Shirley, NY 11967, USA