

Active Recombinant Human EPYC Protein (20-322aa), C-His tagged

Cat. No. EPYC-24H **Lot. No.** (See product label)

SPECIFICATION

Product Overview	Recombinant human DSPG3 (20-322 aa), fused to His-tag at C-terminus, was expressed in HEK293 cell and purified by using conventional chromatography techniques.
Species	Human
Source	HEK293
ProteinLength	20-322 aa
Description	Dermatan sulfate proteoglycan 3 is a member of the small leucine-rich repeat proteoglycan family. This gene is composed of seven exons. It regulates fibrillogenesis by interacting with collagen fibrils and other extracellular matrix proteins.
Form	Liquid
Bio-activity	Measured by the ability of the immobilized protein to support the adhesion of Saos-2 human osteosarcoma cells. When cells are added to human DSPG3 1.25 µg/mL and human fibronectin 0.5 µg/mL coated plates. This effect is more to 60%.
Molecular Mass	35.5 kDa (309aa)
AA Sequence	APTLESINYDSETYDATLEDLDNLYNYENIPVDKVEIEIATVMPSGNRELLTPPPQPEK

 Tel: 1-631-559-9269 1-516-512-3133

 Email: info@creative-biomart.com  Fax: 1-631-938-8127

 45-1 Ramsey Road, Shirley, NY 11967, USA

AQEEEEEEESTPRLIDGSSPQEPEFTGVLGPHTNEDFPTCLLCTCISTTVYCDDHEL
 DAIPPLPKNTAYFYSRFNRIKKINKNDFASLSDLKRIDLTSNLISEIDEDAFRKLPQLRE
 LVLRDNKIRQLPELPTTLTFIDISNNRLGRKGIKQEAFKDMYDLHHLYLTDNNLDHIPL
 PLPENLRALHLQNNNILEMHEDTFCNVKNLTYIRKALEDIRLDGNPINLSKTPQAYMC
 LPRLPVGSLV

Endotoxin < 1 EU/μg of protein (determined by LAL method)

Purity > 95% by SDS-PAGE

Applications SDS-PAGE, Bioactivity

Notes Note: For research use only. This product is not intended or approved for human, diagnostics or veterinary use.

Storage Can be stored at +2 to +8 centigrade for 1 week. For long term storage, aliquot and store at -20 to -80 centigrade. Avoid repeated freezing and thawing cycles.

Concentration 0.5 mg/mL (determined by Absorbance at 280nm)

Storage Buffer Phosphate-Buffered Saline (pH 7.4) containing 10% glycerol

GENE INFORMATION

Gene Name EPYC epiphycan [*Homo sapiens (human)*]

Official Symbol EPYC

Synonyms PGLB; DSPG3; Pg-Lb; SLRR3B

Gene ID 1833

 Tel: 1-631-559-9269 1-516-512-3133

 Email: info@creative-biomart.com  Fax: 1-631-938-8127

 45-1 Ramsey Road, Shirley, NY 11967, USA

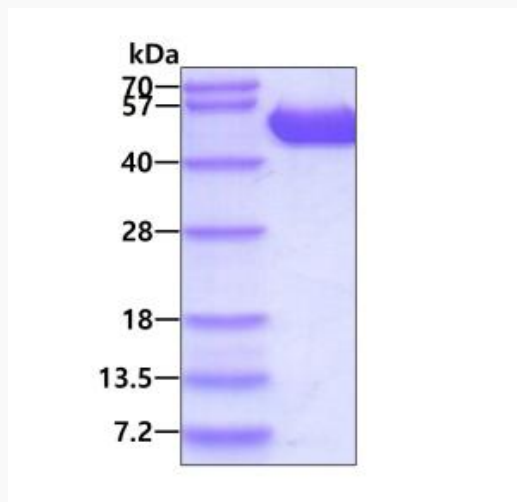
mRNA Refseq [NM_004950](#)

Protein Refseq [NP_004941](#)

MIM [601657](#)

UniProt ID [Q99645](#)

SDS-PAGE



3 μ g by SDS-PAGE under reducing condition and visualized by coomassie blue stain.

 Tel: 1-631-559-9269 1-516-512-3133

 Email: info@creative-biomart.com  Fax: 1-631-938-8127

 45-1 Ramsey Road, Shirley, NY 11967, USA