

## Recombinant Human EPYC Protein, GST-tagged

Cat. No. EPYC-3435H Lot. No. (See product label)

### SPECIFICATION

<b>Product Overview</b>	Human EPYC full-length ORF (AAH30958, 20 a.a. - 322 a.a.) recombinant protein with GST-tag at N-terminal.
<b>Species</b>	Human
<b>Source</b>	Wheat Germ
<b>Description</b>	Dermatan sulfate proteoglycan 3 is a member of the small leucine-rich repeat proteoglycan family. This gene is composed of seven exons. It regulates fibrillogenesis by interacting with collagen fibrils and other extracellular matrix proteins. [provided by RefSeq, Jul 2008]
<b>Molecular Mass</b>	58.74 kDa
<b>AA Sequence</b>	<p>           APTLESINYDSETYDATLEDLDNLYNYENIPVGGKVEIEIATVMPSGNRELLTPPPQPEK            AQEEEEEEESTPRLIDGSSPQEPEFTGVLGPHTNEDFPTCLLCTCISTTVYCDDHEL            DAIPPLPKNTAYFYSRFNRIKKINKNDFASLSDLKRIDLTSNLISEIDEDAFRKLPLQRE            LVLRDNKIRQLPELPTTLTFIDISNNRNLGRKGKIQEAFKDMYDLHHLYLTDNNLDHIPL            PLPENLRALHLQNNNILEMHEDTFCNVKNLTYIRKALEDIRLDGNPINLSKTPQAYMC            LPRLPVGSLV         </p>
<b>Applications</b>	<p>Enzyme-linked Immunoabsorbent Assay</p> <p>Western Blot (Recombinant protein)</p> <p>Antibody Production</p> <p>Protein Array</p>

 Tel: 1-631-559-9269 1-516-512-3133

 Email: [info@creative-biomart.com](mailto:info@creative-biomart.com)  Fax: 1-631-938-8127

 45-1 Ramsey Road, Shirley, NY 11967, USA

<b>Notes</b>	Best use within three months from the date of receipt of this protein.
<b>Storage</b>	Store at -80 centigrade. Aliquot to avoid repeated freezing and thawing.
<b>Storage Buffer</b>	50 mM Tris-HCl, 10 mM reduced Glutathione, pH=8.0 in the elution buffer.

## GENE INFORMATION

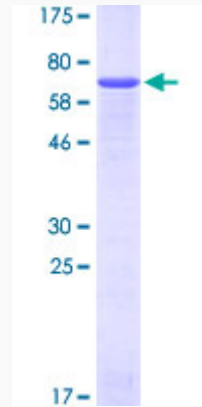
<b>Gene Name</b>	EPYC epiphycan [ Homo sapiens ]
<b>Official Symbol</b>	EPYC
<b>Synonyms</b>	PGLB; DSPG3; Pg-Lb; SLRR3B; EPYC; epiphycan
<b>Gene ID</b>	1833
<b>mRNA Refseq</b>	NM_004950
<b>Protein Refseq</b>	NP_004941
<b>MIM</b>	601657
<b>UniProt ID</b>	Q99645

 Tel: 1-631-559-9269 1-516-512-3133

 Email: [info@creative-biomart.com](mailto:info@creative-biomart.com)  Fax: 1-631-938-8127

 45-1 Ramsey Road, Shirley, NY 11967, USA

**Quality Control  
Testing**



12.5% SDS-PAGE Stained with Coomassie Blue

 Tel: 1-631-559-9269 1-516-512-3133

 Email: [info@creative-biomart.com](mailto:info@creative-biomart.com)  Fax: 1-631-938-8127

 45-1 Ramsey Road, Shirley, NY 11967, USA