

Recombinant Human ERAF Protein, GST-tagged

Cat. No. ERAF-3436H Lot. No. (See product label)

SPECIFICATION

Product Overview	Human ERAF full-length ORF (NP_057717.1, 1 a.a. - 102 a.a.) recombinant protein with GST-tag at N-terminal.
Species	Human
Source	Wheat Germ
Description	This gene encodes a molecular chaperone which binds specifically to free alpha-globin and is involved in hemoglobin assembly. The encoded protein binds to monomeric alpha-globin until it has been transferred to beta-globin to form a heterodimer, which in turn binds to another heterodimer to form the stable tetrameric hemoglobin. Alternative splicing results in multiple transcript variants. [provided by RefSeq, Dec 2015]
Molecular Mass	38.2 kDa
AA Sequence	MALLKANKDLISAGLKEFSVLLNQQVFNDPLVSEEDMVTVVEDWMNFIYINYYRQQV TGEPQERDKALQELRQELNLANPFLAKYRDFLKSHELPSHPPSS
Applications	Enzyme-linked Immunoabsorbent Assay Western Blot (Recombinant protein) Antibody Production Protein Array
Notes	Best use within three months from the date of receipt of this protein.

 Tel: 1-631-559-9269 1-516-512-3133

 Email: info@creative-biomart.com  Fax: 1-631-938-8127

 45-1 Ramsey Road, Shirley, NY 11967, USA

Storage Store at -80 centigrade. Aliquot to avoid repeated freezing and thawing.

Storage Buffer 50 mM Tris-HCl, 10 mM reduced Glutathione, pH=8.0 in the elution buffer.

GENE INFORMATION

Gene Name AHSP alpha hemoglobin stabilizing protein [Homo sapiens (human)]

Official Symbol ERAF

Synonyms AHSP; EDRF; ERAF; alpha hemoglobin stabilizing protein; alpha-hemoglobin-stabilizing protein; erythroid associated factor; erythroid-associated factor; alpha hemoglobin stabilising protein; erythroid differentiation-related factor; erythroid differentiation associated factor

Gene ID 51327

mRNA Refseq NM_016633

Protein Refseq NP_057717

MIM 605821

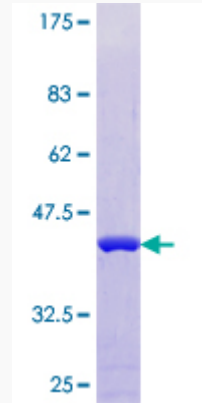
UniProt ID Q9NZD4

 Tel: 1-631-559-9269 1-516-512-3133

 Email: info@creative-biomart.com  Fax: 1-631-938-8127

 45-1 Ramsey Road, Shirley, NY 11967, USA

**Quality Control
Testing**



12.5% SDS-PAGE Stained with Coomassie Blue.

 Tel: 1-631-559-9269 1-516-512-3133

 Email: info@creative-biomart.com  Fax: 1-631-938-8127

 45-1 Ramsey Road, Shirley, NY 11967, USA