

Recombinant Human ERAP1 Protein, Myc/DDK-tagged, C13 and N15-labeled

Cat. No. ERAP1-4254H Lot. No. (See product label)

SPECIFICATION

Product Overview	ERAP1 MS Standard C13 and N15-labeled recombinant protein (NP_057526) with a C-terminal MYC/DDK tag, was expressed in HEK293 cells.
Species	Human
Source	HEK293
Description	<p>The protein encoded by this gene is an aminopeptidase involved in trimming HLA class I-binding precursors so that they can be presented on MHC class I molecules. The encoded protein acts as a monomer or as a heterodimer with ERAP2. This protein may also be involved in blood pressure regulation by inactivation of angiotensin II. Three transcript variants encoding two different isoforms have been found for this gene.</p>
Molecular Mass	107.7 kDa
AA Sequence	<p>MVFLPLKWSLATMSFLLSLLALLTVSTPSWCQSTEASPKRSDGTPFPWNKIRLPEY VIPVHYDLLIHANLTTLTFWGTTKVEITASQPTSTIILHSHHLQISRATLRKGAGERLSE EPLQVLEHPRQEQIALLAPEPLLVLGPYTVVIHYAGNLSETFHGFYKSTYRTKEGELRI LASTQFEPTAARMAFPCFDEPAFKASFSIKIRREPRHLAISNMPLVKSVTVAEGLIEDH FDVTVKMSTYLVAFIISDFESVSKITKSGVKVSVYAVPDKINQADYALDAAVTLLEFYE DYFSIPYPLPKQDLAAIPDFQSGAMENWGLTTYRESALLFDAEKSSASSKLGITMTVA HELAHQWFGNLVTMEWWNDLWLNEGFAKFMEFVSVSVTHPELKVGDYFFGKCFD</p>

 Tel: 1-631-559-9269 1-516-512-3133

 Email: info@creative-biomart.com  Fax: 1-631-938-8127

 45-1 Ramsey Road, Shirley, NY 11967, USA

AMEVDALNSSHPVSTPVENPAQIREMFDDVSYDKGACILNMLREYLSADAFKSGIVQ
 YLQKHSYKNTKNEDLWDSMASICPTDGVKGMDFGFCRSRSHSSSSSHWHQEGVDV
 KTMMNTWTLQKGFPLITITVRGRNVHMKQEHYMKGSDGAPDTGYLWHVPLTFITSK
 SDMVHRFLLKTKTDVLILPEEVEWIKFNVGMNGYYIVHYEDDGWDSLTLGKKGHTA
 VSSNDRASLINNAFQLVSIGKLSIEKALDLSLYLKHETEIMPVFQGLNELIPMYKLMEK
 RDMNEVETQFKAFLIRLLRDLIDKQTTWDEGSVSEMLRSQLLLLACVHNYQPCVQ
 RAEGYFRKWKESNGNLSLPVDVTLAVFAVGAQSTEGWDFLYSKYQFSLSSSTEKSQI
 EFALCRTQNKEKLQWLLDESFKGDKIKTQEFQILTIGRNPVGYPLAWQFLRKNWN
 KLVQKFELGSSSIAHMVMGTTNQFSTRTRLEEVKGGFSSLKENGSQLRCVQQTIETI
 EENIGWMDKNFDKIRVWLQSEKLEHDPEADATGTRTRPLEQKLISEEDLAANDILDY
 KDDDDKV

Purity > 80% as determined by SDS-PAGE and Coomassie blue staining

Stability Stable for 3 months from receipt of products under proper storage and handling conditions.

Storage Store at -80 centigrade. Avoid repeated freeze-thaw cycles.

Concentration 50 µg/mL as determined by BCA

Storage Buffer 100 mM glycine, 25 mM Tris-HCl, pH 7.3.

GENE INFORMATION

Gene Name ERAP1 endoplasmic reticulum aminopeptidase 1 [Homo sapiens (human)]

Official Symbol ERAP1

Synonyms ERAP1; endoplasmic reticulum aminopeptidase 1; A LAP; adipocyte derived leucine aminopeptidase; aminopeptidase regulator of TNFR1 shedding; ARTS 1; ERAAP1;

 Tel: 1-631-559-9269 1-516-512-3133

 Email: info@creative-biomart.com  Fax: 1-631-938-8127

 45-1 Ramsey Road, Shirley, NY 11967, USA

KIAA0525; PILS AP; puromycin insensitive leucyl specific aminopeptidase; aminopeptidase PILS; adipocyte-derived leucine aminopeptidase; puromycin-insensitive leucyl-specific aminopeptidase; endoplasmic reticulum aminopeptidase associated with antigen processing; type 1 tumor necrosis factor receptor shedding aminopeptidase regulator; ALAP; A-LAP; ARTS1; ERAAP; APPILS; ARTS-1; PILSAP; PILS-AP;

Gene ID [51752](#)

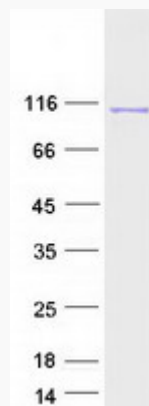
mRNA Refseq [NM_016442](#)

Protein Refseq [NP_057526](#)

MIM [606832](#)

UniProt ID [Q9NZ08](#)

SDS-PAGE



 Tel: 1-631-559-9269 1-516-512-3133

 Email: info@creative-biomart.com  Fax: 1-631-938-8127

 45-1 Ramsey Road, Shirley, NY 11967, USA