

Recombinant Full Length Human ERAP1 Protein, C-Flag-tagged

Cat. No. ERAP1-665HFL **Lot. No.** (See product label)

SPECIFICATION

Product Overview	Recombinant Full Length Human ERAP1 Protein, fused to Flag-tag at C-terminus, was expressed in Mammalian cells.
Species	Human
Source	Mammalian Cells
Description	The protein encoded by this gene is an aminopeptidase involved in trimming HLA class I-binding precursors so that they can be presented on MHC class I molecules. The encoded protein acts as a monomer or as a heterodimer with ERAP2. This protein may also be involved in blood pressure regulation by inactivation of angiotensin II. Three transcript variants encoding two different isoforms have been found for this gene.
Form	25 mM Tris HCl, pH 7.3, 100 mM glycine, 10% glycerol.
Molecular Mass	107.7 kDa
AA Sequence	MVFLPLKWSLATMSFLLSLLALLTVSTPSWCQSTEASPKRSDGTPFPWNKIRLPEY VIPVHYDLLIHAN LTTLTFWGTTKVEITASQPTSTIILHSHHLQISRATLRKGAGERLSE EPLQVLEHPRQEIQIALLAPEPLL VGLPYTVVIHYAGNLSETFHGFYKSTYRTKEGELR ILASTQFEPTAARMAFPCFDEPAFKASFSIKIRRE PRHLAISNMPLVKSVTVAEGLIED HFDVTVKMSTYLVAFIISDFESVSKITKSGVKVSVYAVPDKINQAD YALDAAVTLLEFY EDYFSIPYPLPKQDLAAIPDFQSGAMENWGLTTYRESALLFDAEKSSASSKLGITMT

 Tel: 1-631-559-9269 1-516-512-3133

 Email: info@creative-biomart.com  Fax: 1-631-938-8127

 45-1 Ramsey Road, Shirley, NY 11967, USA

VAHELAHQWFGNLTMEWWNDLWLNELGFAKFMFVSVSVTHPELKVGDYFFGKC
 FDAMEVDALNSSHPVS TPVENPAQIREMFDDVSYDKGACILNMLREYLSADAFKSGI
 VQYLQKHSYKNTKNEDLWDSMASICPTDG VKGMDGFCSRSQHSSSSSHWHQEGV
 DVKTMNTWTLQKGFPLITITVRGRNVHMKQEHYMKGSDGAPDTG YLWHVPLTFIT
 SKSDMVHRFLLKTKTDVILPEEVEWIKFNVGMNGYYIVHYEDDGWDSLTLGKGGTH
 TA VSSNDRASLINNAFQLVLSIGKLSIEKALDLSLYLKHETEIMPVFQGLNELIPMYKLM
 EKRDMEVETQFK AFLIRLLRDLIDKQTTWDEGSVSRMLRSQLLLLACVHNYQPC
 VQRAEGYFRKWKESNGNLSLPVDVTLA VFAVGAQSTEGWDFLYSKYQFSLSTEK
 SQIEFALCRTQNKEKLQWLLDESFKGDKIKTQEFQILTIG RNPVGYPLAWQFLRK
 NWNKLVQKFELGSSSIAHMVMGTTNQFSTRTRLEEVKGFSSSLKENGSQLRCVQQ
 TIETIEENIGWMDKNFDKIRVWLQSEKLEHDPEADATGTRTRPLEQKLISEEDLAANDI
 LDYKDDDDKV

Purity	> 80% as determined by SDS-PAGE and Coomassie blue staining.
Stability	Stable for 12 months from the date of receipt of the product under proper storage and handling conditions. Avoid repeated freeze-thaw cycles.
Storage	Store at -80 centigrade.
Concentration	>50 ug/mL as determined by microplate BCA method.
Preparation	Recombinant protein was captured through anti-DDK affinity column followed by conventional chromatography steps.
Protein Families	Druggable Genome, Protease, Secreted Protein
Full Length	Full L.

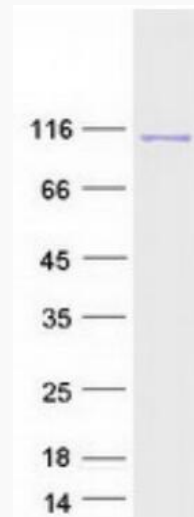
GENE INFORMATION

 Tel: 1-631-559-9269 1-516-512-3133

 Email: info@creative-biomart.com  Fax: 1-631-938-8127

 45-1 Ramsey Road, Shirley, NY 11967, USA

Gene Name	ERAP1 endoplasmic reticulum aminopeptidase 1 [Homo sapiens (human)]
Official Symbol	ERAP1
Synonyms	ALAP; A-LAP; ARTS1; ERAAP; APPILS; ARTS-1; ERAAP1; PILSAP; PILS-AP
Gene ID	51752
mRNA Refseq	NM_016442.5
Protein Refseq	NP_057526.3
MIM	606832
UniProt ID	Q9NZ08



Coomassie blue staining of purified ERAP1 protein.

 Tel: 1-631-559-9269 1-516-512-3133

 Email: info@creative-biomart.com  Fax: 1-631-938-8127

 45-1 Ramsey Road, Shirley, NY 11967, USA