

# Recombinant Human ERBB2 Protein, MYC/DDK-tagged, C13 and N15-labeled

**Cat. No.** ERBB2-077H    **Lot. No.** (See product label)

## SPECIFICATION

<b>Product Overview</b>	Recombinant Human ERBB2 MS Standard Protein (NP_004439, C13 and N15-labeled), was expressed in HEK293 cells with C-terminal MYC/DDK tag.
<b>Species</b>	Human
<b>Source</b>	HEK293
<b>Description</b>	<p>This gene encodes a member of the epidermal growth factor (EGF) receptor family of receptor tyrosine kinases. This protein has no ligand binding domain of its own and therefore cannot bind growth factors. However, it does bind tightly to other ligand-bound EGF receptor family members to form a heterodimer, stabilizing ligand binding and enhancing kinase-mediated activation of downstream signalling pathways, such as those involving mitogen-activated protein kinase and phosphatidylinositol-3 kinase. Allelic variations at amino acid positions 654 and 655 of isoform a (positions 624 and 625 of isoform b) have been reported, with the most common allele, Ile654/Ile655, shown here. Amplification and/or overexpression of this gene has been reported in numerous cancers, including breast and ovarian tumors. Alternative splicing results in several additional transcript variants, some encoding different isoforms and others that have not been fully characterized.</p>
<b>Molecular Mass</b>	137.7 kDa
<b>AA Sequence</b>	MELAALCRWGLLLALLPPGAASTQVCTGTDMKRLRLPASPETHLDMLRHLYQGCQVV

 Tel: 1-631-559-9269    1-516-512-3133

 Email: [info@creative-biomart.com](mailto:info@creative-biomart.com)     Fax: 1-631-938-8127

 45-1 Ramsey Road, Shirley, NY 11967, USA

QGNLELYLPTNASLSFLQDIQEVQGYVLIHNRVQRVPLQRLRIVRGTQLFEDNYAL  
 AVLDNGDPLNNTTPVTGASPGGLRELQRLSLTEILKGGVLIQRNPQLCYQDTILWKDI  
 FHKNNQLALTLIDTNRSRACHPCSPMCKGSRWGESSEDCQSLTRTVCAAGGCARC  
 KGPLPTDCCHEQCAAGCTGPKHSDCLACLHFNHSGICELHCPALVTYNTDTFESMP  
 NPEGRYTFGASCVTACPYNLSTDVGSCTLVCPHNLQEVTAEDGTQRCEKCSKPC  
 ARVCYGLGMEHLREVRAVTSANIQEFAGCKKIFGSLAFLPESFDGDPASNTAPLQPE  
 QLQVFETLEEITGYLYISAWPDSLPLDSVFNLQVIRGRILHNGAYSLLTQGLGISWL  
 GLRSLRELGSGLALIHNNHLCFVHTVPWDQLFRNPHQALLHTANRPEDECVGEG  
 ACHQLCARGHCWGPPTQCVNCSQFLRGQECVEECRVLQGLPREYVNRHCLPC  
 HPECQPQNGSVTCFGLADQCVACAHYKDPFFCVARCPSPGVKPDLSYMPIWKFPD  
 EEGACQPCPINCTHSCVDLDDKGCPAEQRASPLTSIISAVVIGILLVVVLGVVFGILIKR  
 RQQKIRKYTMRLLQETELVEPLTPSGAMPNQAQMRILKETELRKVKVLGSGAFGT  
 YKGIWIPDGENVKIPVAIKVLRENTSPKANKEILDEAYVMAGVGSPIVSRLLGICLTST  
 VQLVTQLMPYGCLLDHVRENRLGSLQDLLNWCMIKGMSSYLEDVRLVHRDLAA  
 RNVLVKSPNHVKITDFGLARLLDIDETEYHADGGKVPIKWMALLESILRRRFTHQSDV  
 WSYGVTWELMTFGAKPYDGIPAREIPDLLEKGERLPQPPICIDVYMIMVKCWMID  
 SECRPRFRELVSEFSRMARDPQRFVVIQNEGLGPASPLDSTFYRSLLEDDDMGDLV  
 DAEYLVPQQGFFCPDPAPGAGGMVHHRHRSSTRSGGGDLTLGLEPSEEEAPRS  
 PLAPSEGAGSDVFDGDLGMGAAGLQSLPTHDPSPQLQRYSEDPTVPLPSETDGYV  
 APLTCSPQPEYVNQPDVRPQPPSPREGPLPAARPAGATLERPKTLSPGKNGVVKDV  
 FAFGGAVENPEYLTPQGGAAPQPHPPAFSPAFDNLYYWDQDPPERGAPPSTFKG  
 TPTAENPEYLGDLVPVTRTRPLEQKLISEEDLAANDILDYKDDDDKV

**Purity** > 80% as determined by SDS-PAGE and Coomassie blue staining

**Stability** Stable for 3 months from receipt of products under proper storage and handling conditions.

**Storage** Store at -80 centigrade. Avoid repeated freeze-thaw cycles.

 Tel: 1-631-559-9269 1-516-512-3133

 Email: [info@creative-biomart.com](mailto:info@creative-biomart.com)  Fax: 1-631-938-8127

 45-1 Ramsey Road, Shirley, NY 11967, USA

**Concentration** 50 µg/mL as determined by BCA

**Storage Buffer** 100 mM glycine, 25 mM Tris-HCl, pH 7.3.

## GENE INFORMATION

**Gene Name** [ERBB2 erb-b2 receptor tyrosine kinase 2 \[ Homo sapiens \(human\) \]](#)

**Official Symbol** [ERBB2](#)

**Synonyms**

ERBB2; erb-b2 receptor tyrosine kinase 2; CD340; HER-2; HER-2/neu; HER2; MLN 19; NEU; NGL; TKR1; receptor tyrosine-protein kinase erbB-2; c-erb B2/neu protein; herstatin; human epidermal growth factor receptor 2; metastatic lymph node gene 19 protein; neuro/glioblastoma derived oncogene homolog; neuroblastoma/glioblastoma derived oncogene homolog; proto-oncogene Neu; proto-oncogene c-ErbB-2; tyrosine kinase-type cell surface receptor HER2; v-erb-b2 avian erythroblastic leukemia viral oncogene homolog 2; v-erb-b2 avian erythroblastic leukemia viral oncoprotein 2; v-erb-b2 erythroblastic leukemia viral oncogene homolog 2, neuro/glioblastoma derived oncogene homolog; EC 2.7.10.1

**Gene ID** [2064](#)

**mRNA Refseq** [NM\\_004448](#)

**Protein Refseq** [NP\\_004439](#)

**MIM** [164870](#)

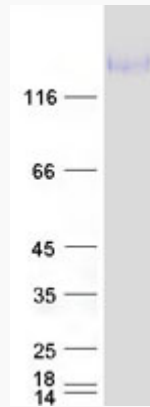
**UniProt ID** [P04626](#)

 Tel: 1-631-559-9269 1-516-512-3133

 Email: [info@creative-biomart.com](mailto:info@creative-biomart.com)  Fax: 1-631-938-8127

 45-1 Ramsey Road, Shirley, NY 11967, USA

**SDS-PAGE**



 Tel: 1-631-559-9269 1-516-512-3133

 Email: [info@creative-biomart.com](mailto:info@creative-biomart.com)  Fax: 1-631-938-8127

 45-1 Ramsey Road, Shirley, NY 11967, USA