

Recombinant Human ERBB2 protein, His-Avi-tagged

Cat. No. ERBB2-083H Lot. No. (See product label)

SPECIFICATION

Product Overview	Recombinant Human ErbB2/Her2 Protein (23-652aa), was expressed in mammalian system with C-terminal His tag and Avi tag.
Species	Human
Source	HEK293
ProteinLength	23-652 aa
Description	ErbB2, also called Neu and Her2 (human epidermal growth factor receptor 2), is a type I membrane glycoprotein that is a member of the ErbB family of tyrosine kinase receptors. ErbB family members serve as receptors for the epidermal growth factor (EGF) family of growth factors. Upon ERBB2 activation, the MEMO1-RHOA-DIAPH1 signaling pathway elicits the phosphorylation and thus the inhibition of GSK3B at cell membrane. This prevents the phosphorylation of APC and CLASP2, allowing its association with the cell membrane.
Form	Supplied as 0.22um filtered solution in PBS (pH 7.4).
Molecular Mass	The Protein has a calculated MW of 72.3kDa .As a result of glycosylation, the protein migrates as 80-100kDa based on Bis-Tris PAGE.
Endotoxin	Less than 0.05EU per ug by the LAL method.
Purity	> 95% as determined by Bis-Tris PAGE; > 95% as determined by HPLC

 Tel: 1-631-559-9269 1-516-512-3133

 Email: info@creative-biomart.com  Fax: 1-631-938-8127

 45-1 Ramsey Road, Shirley, NY 11967, USA

Storage The product should be stored at -70°C. Please do not repeated freeze-thaw cycles.

Reconstitution It is recommended that sterile water be added to the vial to prepare a stock solution of 0.2 ug/ul. Centrifuge the vial at 4°C before opening to recover the entire contents.

GENE INFORMATION

Gene Name ERBB2 v-erb-b2 erythroblastic leukemia viral oncogene homolog 2, neuro/glioblastoma derived oncogene homolog (avian) [Homo sapiens]

Official Symbol ERBB2

Synonyms D340 antigen; CD340; c-erb B2/neu protein; EC 2.7.10; EGFR2; ErbB2; HER2; HER-2; HER2EC 2.7.10.1; herstatin; Metastatic lymph node gene 19 protein; MLN 19; MLN19; Neu Oncogene; NEUHER-2/neu; neuroblastoma/glioblastoma derived oncogene homolog; NGL; NGLTKR1; p185erbB2; Proto-oncogene c-ErbB-2; Proto-oncogene Neu; receptor tyrosine-protein kinase erbB-2; TKR1; Tyrosine kinase-type cell surface receptor HER2; v-erb-b2 avian erythroblastic leukemia viral oncogene homolog 2(neuro/glioblastoma derived oncogene homolog); v-erb-b2 erythroblastic leukemia viral oncogene homolog 2, neuro/glioblastomaderived oncogene homolog (avian)

Gene ID 2064

mRNA Refseq NM_001005862

Protein Refseq NP_001005862

MIM 164870

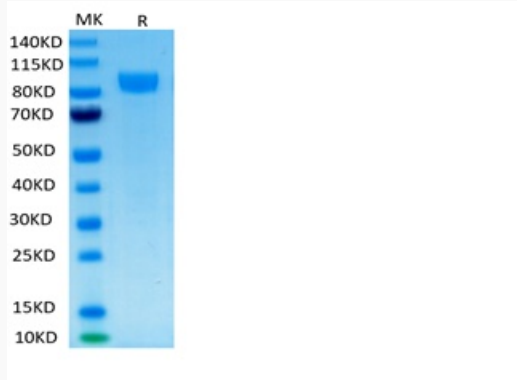
UniProt ID P04626

 Tel: 1-631-559-9269 1-516-512-3133

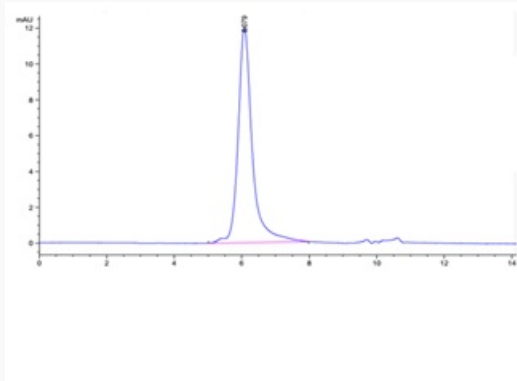
 Email: info@creative-biomart.com  Fax: 1-631-938-8127

 45-1 Ramsey Road, Shirley, NY 11967, USA

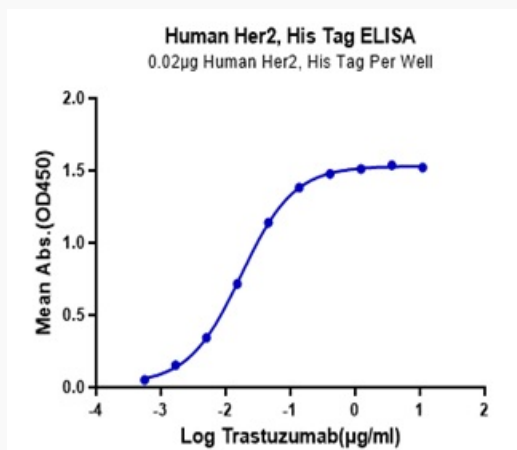
Tris-Bis PAGE



HPLC data



ELISA data



 Tel: 1-631-559-9269 1-516-512-3133

 Email: info@creative-biomart.com  Fax: 1-631-938-8127

 45-1 Ramsey Road, Shirley, NY 11967, USA