

## Recombinant Human ERBB2 Protein, His & GST-tagged

Cat. No. ERBB2-176H Lot. No. (See product label)

### SPECIFICATION

<b>Product Overview</b>	Recombinant Human ErbB2 Protein cytoplasmic domain (NP_004439.2, 676-1255aa), was expressed in Insect Cells with N-terminal His-tagged GST tag.
<b>Species</b>	Human
<b>Source</b>	Insect Cells
<b>ProteinLength</b>	676-1255 aa
<b>Form</b>	Lyophilized from sterile 20 mM Tris, 500 mM NaCl, 2 mM GSH, 10 % gly, pH 8.0.
<b>Molecular Mass</b>	The recombinant human ErbB2 (676-1255)/GST chimera consists of 817 amino acids and predicts a molecular mass of 92 kDa. It migrates as an approximately 100 kDa band in SDS-PAGE under reducing conditions.
<b>Endotoxin</b>	< 1.0 EU per µg of the protein as determined by the LAL method.
<b>Purity</b>	> 75 % as determined by SDS-PAGE and SEC-HPLC Analysis.
<b>Storage</b>	Store it under sterile conditions at -20°C to -80°C upon receiving. Recommend to aliquot the protein into smaller quantities for optimal storage. Avoid repeated freeze-thaw cycles.
<b>Reconstitution</b>	It is recommended that sterile water be added to the vial to prepare a stock solution of 0.2 ug/ul. Centrifuge the vial at 4°C before opening to recover the entire contents.

 Tel: 1-631-559-9269 1-516-512-3133

 Email: [info@creative-biomart.com](mailto:info@creative-biomart.com)  Fax: 1-631-938-8127

 45-1 Ramsey Road, Shirley, NY 11967, USA

## GENE INFORMATION

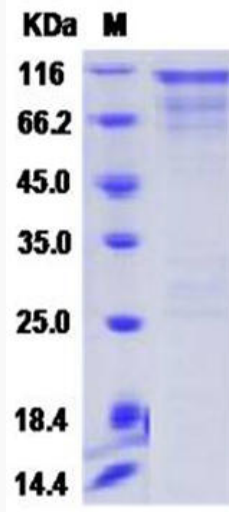
<b>Gene Name</b>	ERBB2 v-erb-b2 erythroblastic leukemia viral oncogene homolog 2, neuro/glioblastoma derived oncogene homolog (avian) [ Homo sapiens ]
<b>Official Symbol</b>	ERBB2
<b>Synonyms</b>	ERBB2; v-erb-b2 erythroblastic leukemia viral oncogene homolog 2, neuro/glioblastoma derived oncogene homolog (avian); NGL, v erb b2 avian erythroblastic leukemia viral oncogene homolog 2 (neuro/glioblastoma derived oncogene homolog); receptor tyrosine-protein kinase erbB-2; CD340; HER 2; HER2; NEU; herstatin; p185erbB2; proto-oncogene Neu; c-erb B2/neu protein; proto-oncogene c-ErbB-2; metastatic lymph node gene 19 protein; tyrosine kinase-type cell surface receptor HER2; neuroblastoma/glioblastoma derived oncogene homolog; v-erb-b2 avian erythroblastic leukemia viral oncogene homolog 2 (neuro/glioblastoma derived oncogene homolog); NGL; TKR1; HER-2; MLN 19; HER-2/neu;
<b>Gene ID</b>	2064
<b>mRNA Refseq</b>	NM_001005862
<b>Protein Refseq</b>	NP_001005862
<b>MIM</b>	164870
<b>UniProt ID</b>	P04626

 Tel: 1-631-559-9269 1-516-512-3133

 Email: [info@creative-biomart.com](mailto:info@creative-biomart.com)  Fax: 1-631-938-8127

 45-1 Ramsey Road, Shirley, NY 11967, USA

SDS-PAGE



 Tel: 1-631-559-9269 1-516-512-3133

 Email: [info@creative-biomart.com](mailto:info@creative-biomart.com)  Fax: 1-631-938-8127

 45-1 Ramsey Road, Shirley, NY 11967, USA