

Recombinant Human ERBB2 protein, Fc-tagged

Cat. No. ERBB2-57H Lot. No. (See product label)

SPECIFICATION

Product Overview	Recombinant Human ERBB2 protein (Thr23-Thr652) was fused to mouse IgG2a Fc tag at the C-terminus and expressed in human 293 cells (HEK293).
Species	Human
Source	HEK293
ProteinLength	Thr23-Thr652
Description	<p>Human Epidermal growth factor Receptor 2 (HER2) is also called ERBB2, HER-2,HER-2/neu, NEU, NGL,TKR1 and c-erb B2,and is a protein giving higher aggressiveness in breast cancers. It is a member of the ErbB protein family, more commonly known as the epidermal growth factor receptor family. HER2 is a cell membrane surface-bound receptor tyrosine kinase and is normally involved in the signal transduction pathways leading to cell growth and differentiation. HER2 is thought to be an orphan receptor, with none of the EGF family of ligands able to activate it. Approximately 30% of breast cancers have an amplification of the HER2 gene or overexpression of its protein product. Overexpression of this receptor in breast cancer is associated with increased disease recurrence and worse prognosis. HER2 appears to play roles in development, cancer, communication at the neuromuscular junction and regulation of cell growth and differentiation .</p>
Predicted N Terminal	Thr23
Form	Lyophilized from 0.22

 Tel: 1-631-559-9269 1-516-512-3133

 Email: info@creative-biomart.com  Fax: 1-631-938-8127

 45-1 Ramsey Road, Shirley, NY 11967, USA

	µm filtered solution in Tris with Glycine, Arginine and NaCl, pH7.5, 10% trehalose.
Molecular Mass	The protein has a calculated MW of 96.2 kDa. The protein migrates as 110 kDa under reducing (R) condition (SDS-PAGE) due to glycosylation.
Endotoxin	Less than 0.1 EU per µg by the LAL method.
Purity	>95% as determined by SDS-PAGE.
Storage	For long term storage, the product should be stored at lyophilized state at -20°C or lower. Please avoid repeated freeze-thaw cycles. This product is stable after storage at: -20°C to -70°C for 12 months in lyophilized state; -70°C for 3 months under sterile conditions after reconstitution.
Reconstitution	It is recommended that sterile water be added to the vial to prepare a stock solution of 0.2 mg/ml. Centrifuge the vial at 4°C before opening to recover the entire contents.

GENE INFORMATION

Gene Name	ERBB2
Official Symbol	ERBB2
Synonyms	ERBB2,CD340,HER-2/neu,HER2,MLN19,NEU,NGL,TKR1
Gene ID	2064
mRNA Refseq	NM_004448.4

 Tel: 1-631-559-9269 1-516-512-3133

 Email: info@creative-biomart.com  Fax: 1-631-938-8127

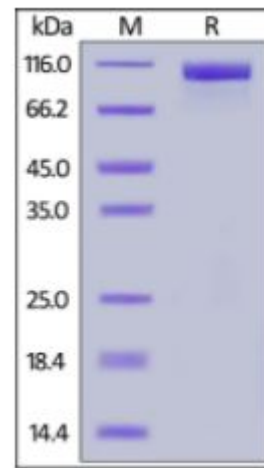
 45-1 Ramsey Road, Shirley, NY 11967, USA

Protein Refseq NP_004439.2

MIM 164870

UniProt ID P04626

**SDS-PAGE of
ERBB2-57H**



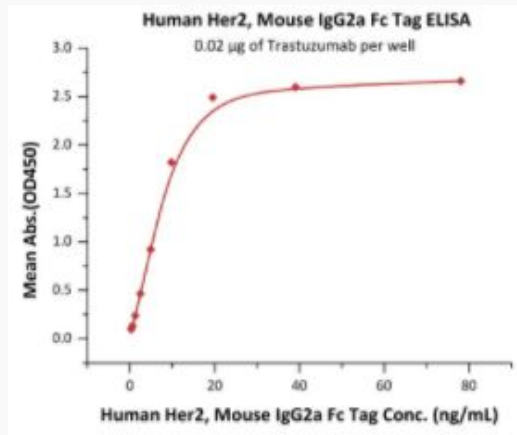
Human Her2, Mouse IgG2a Fc Tag on SDS-PAGE under reducing (R) condition. The gel was stained overnight with Coomassie Blue. The purity of the protein is greater than 95%.

 Tel: 1-631-559-9269 1-516-512-3133

 Email: info@creative-biomart.com  Fax: 1-631-938-8127

 45-1 Ramsey Road, Shirley, NY 11967, USA

**Bioactivity-ELISA of
ERBB2-57H**



Immobilized Trastuzumab at 0.2 µg/mL (100 µL/well) can bind Human Her2, Mouse IgG2a Fc Tag with a linear range of 0.3-10 ng/mL (QC tested).

 Tel: 1-631-559-9269 1-516-512-3133

 Email: info@creative-biomart.com  Fax: 1-631-938-8127

 45-1 Ramsey Road, Shirley, NY 11967, USA