

Recombinant Human ERBB2 Protein (ECD), His-tagged(C-ter)

Cat. No. ERBB2-67H Lot. No. (See product label)

SPECIFICATION

Product Overview	Recombinant Human ERBB2 Protein (ECD) with His tag (C-ter) was expressed in HEK293.
Species	Human
Source	HEK293
ProteinLength	Thr23-Thr652
Description	<p>This gene encodes a member of the epidermal growth factor (EGF) receptor family of receptor tyrosine kinases. This protein has no ligand binding domain of its own and therefore cannot bind growth factors. However, it does bind tightly to other ligand-bound EGF receptor family members to form a heterodimer, stabilizing ligand binding and enhancing kinase-mediated activation of downstream signalling pathways, such as those involving mitogen-activated protein kinase and phosphatidylinositol-3 kinase. Allelic variations at amino acid positions 654 and 655 of isoform a (positions 624 and 625 of isoform b) have been reported, with the most common allele, Ile654/Ile655, shown here. Amplification and/or overexpression of this gene has been reported in numerous cancers, including breast and ovarian tumors. Alternative splicing results in several additional transcript variants, some encoding different isoforms and others that have not been fully characterized. [provided by RefSeq, Jul 2008]</p>
Form	Powder
Endotoxin	Endotoxin level is less than 0.1

 Tel: 1-631-559-9269 1-516-512-3133

 Email: info@creative-biomart.com  Fax: 1-631-938-8127

 45-1 Ramsey Road, Shirley, NY 11967, USA

	EU/μg of the protein, as determined by the LAL test.
Purity	> 95% (by SDS-PAGE)
Applications	Binding, SDS-PAGE
Notes	For laboratory research only, not for drug, diagnostic or other use.
Storage	Lyophilized protein should be stored at -20°C or -80°C. After reconstitution, aliquot and store at -20°C for up to one month, at 2-8°C for up to one week. Storage in frost free freezers is not recommended. Avoid repeated freeze/thaw cycles. Suggest spin the vial prior to opening.
Storage Buffer	PBS (pH 7.4)
Reconstitution	Reconstitute to a concentration of 0.1-0.5 mg/ml in sterile distilled water.

GENE INFORMATION

Gene Name	ERBB2 v-erb-b2 erythroblastic leukemia viral oncogene homolog 2, neuro/glioblastoma derived oncogene homolog (avian) [Homo sapiens]
Official Symbol	ERBB2
Synonyms	ERBB2; v-erb-b2 erythroblastic leukemia viral oncogene homolog 2, neuro/glioblastoma derived oncogene homolog (avian); NGL, v erb b2 avian erythroblastic leukemia viral oncogene homolog 2 (neuro/glioblastoma derived oncogene homolog); receptor tyrosine-protein kinase erbB-2; CD340; HER 2; HER2; NEU; herstatin; p185erbB2; proto-oncogene Neu; c-erb B2/neu protein; proto-oncogene c-ErbB-2; metastatic lymph node gene 19 protein; tyrosine kinase-type cell surface receptor HER2; neuroblastoma/glioblastoma derived oncogene homolog; v-

 Tel: 1-631-559-9269 1-516-512-3133

 Email: info@creative-biomart.com  Fax: 1-631-938-8127

 45-1 Ramsey Road, Shirley, NY 11967, USA

erb-b2 avian erythroblastic leukemia viral oncogene homolog 2 (neuro/glioblastoma derived oncogene homolog); NGL; TKR1; HER-2; MLN 19; HER-2/neu;

Gene ID 2064

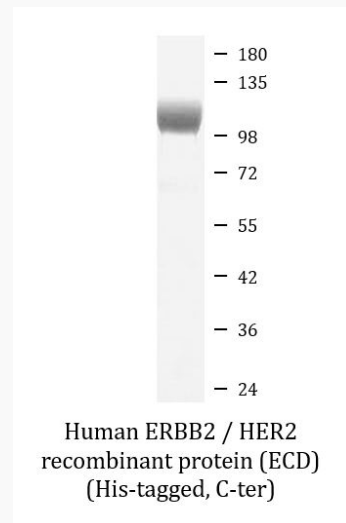
mRNA Refseq NM_001005862

Protein Refseq NP_001005862

MIM 164870

UniProt ID P04626

SDS-PAGE



 Tel: 1-631-559-9269 1-516-512-3133

 Email: info@creative-biomart.com  Fax: 1-631-938-8127

 45-1 Ramsey Road, Shirley, NY 11967, USA