

Active Recombinant Human ERBB2(676-end) Protein, C-His-tagged

Cat. No. ERBB2-76H **Lot. No.** (See product label)

SPECIFICATION

Product Overview C-terminal 6His-tagged, recombinant, human ErbB2 amino acids 676- end expressed by baculovirus in Sf21 insect cells. Purified using immobilized metal affinity chromatography.

Species Human

Source Sf21 Cells

ProteinLength 676-end

Description Human EGF receptor 2 (HER2, ERBB2) tyrosine kinase is an EGF receptor-related protein tyrosine kinase which is overexpressed in many mammary and ovarian carcinomas. Binding of the ligand to the receptor is believed to activate the receptor's intrinsic protein kinase activity, initiating a signal transduction pathway which leads to increased cell proliferation. Truncated HER2, lacking the extracellular and transmembrane regions, is constitutively active. The active kinase transfers g-phosphates of ATP to the phenolic hydroxyl of specific tyrosine residues on target proteins.

Source Sf21

Species Human

Tag His

 Tel: 1-631-559-9269 1-516-512-3133

 Email: info@creative-biomart.com  Fax: 1-631-938-8127

 45-1 Ramsey Road, Shirley, NY 11967, USA

Form	1.871mg/ml of enzyme in 50mM Tris/HCl pH7.5, 150mM NaCl, 0.5mM EDTA, 0.01% CHAPS, 50% glycerol, 2mM DTT. Frozen solution.
Bio-activity	361U/mg, where one unit of ErbB2 activity is defined as 1nmol phosphate incorporated into 0.1mg/ml poly(Glu, Tyr) (4:1) per minute at 30 centigrade with a final ATP concentration of 100µM.
Molecular Mass	69 kDa
AA Sequence	<p>1 MLVPRGSPWI RNSKAYVDKR RQQKIRKYTM RLLQETELV EPLTPSGAMP NQAQMRILKE 61 TELRKVKVLG SGAFGTVYKG IWIPDGENVK IPVAIKVLRE NTSPKANKEI LDEAYVMAGV 121 DSPYVSRLLG ICLTSTVQLV TQLMPYGCLL DHVRENRGRL GSQDLLNWCM QIAKGMSYLE 181 DVRLVHRDLA ARNVLVKSPN HVKITDFGLA RLLDIDETAY HADGGKVPIK WMALESILRR 241 RFTHQSDVWS YGVTVWELMT FGAAPYDGIK AREIPDLLEK GERLPQPPIC TIDVYMIMVK 301 CWMIDSECRP RFRELVSEFS RMARDPQRFV VIQNEGLGPA SPLDSTFYRS LLEDDDMGDL 361 VDAEEYLVPQ QGFFCPDPAP GAGGMVHHRH RSSSTRSGGG DLTLGLEPSE EEAPRSPLAP 421 SEGAGSDVFD GDLGMGAAGK LQSLPTHDP PLQRYSEDPT VPLPSETDGY VAPLTCSPQP 481 EYVNPDPVRP QPPSPREGPL PAARPAGATL ERPKTLSPGK NGVVKDVFAF GGAVENPEYL 541 TPQGGAAPQP HPPPAFSPAF DNLYYWDQDP PERGAPPSTF KGTPTAENPE YLGLDVPVCS 601 RHASGTDDYD IATTHHHHHH</p>
Purity	Purity 85% by SDS-PAGE and Coomassie blue staining.
Applications	Drug Discovery & Development
Storage	6 months at -70 centigrade.
Handling Advice	Rapidly thaw the vial under cold water and immediately place on ice. Aliquot unused

 Tel: 1-631-559-9269 1-516-512-3133

 Email: info@creative-biomart.com  Fax: 1-631-938-8127

 45-1 Ramsey Road, Shirley, NY 11967, USA

material into prechilled micro-centrifuge tubes and immediately snap-freeze the vials in liquid nitrogen prior to re-storage at -70 centigrade.

Use/Stability

On receipt of material store at -70 centigrade. Unopened reagent is stable for a minimum of 1 year from date of shipment when stored at recommended storage temperature. Avoid repeat freeze/thaw cycles. For maximum recovery of product, centrifuge original vial prior to removing the cap.

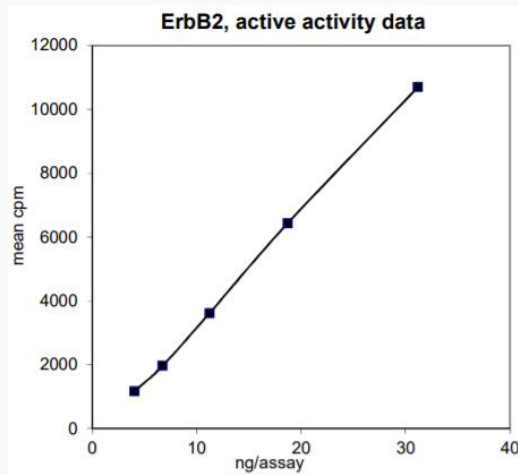
GENE INFORMATION

Gene Name	ERBB2 erb-b2 receptor tyrosine kinase 2 [Homo sapiens (human)]
Official Symbol	ERBB2
Synonyms	ERBB2; erb-b2 receptor tyrosine kinase 2; NEU; NGL; HER2; TKR1; CD340; HER-2; VSCN2; MLN 19; MLN-19; c-ERB2; c-ERB-2; HER-2/neu; p185(erbB2)
Gene ID	2064
mRNA Refseq	NM_004448.4
Protein Refseq	NP_004439.2
MIM	164870
UniProt ID	P04626

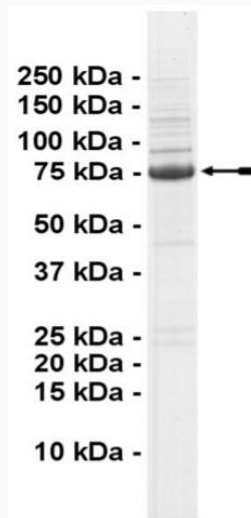
 Tel: 1-631-559-9269 1-516-512-3133

 Email: info@creative-biomart.com  Fax: 1-631-938-8127

 45-1 Ramsey Road, Shirley, NY 11967, USA

Kinase Assay


4–32ng of this lot of enzyme phosphorylated 0.1 mg/ml poly(Glu, Tyr) (4:1) in the assay.

SDS-PAGE


Purity was assessed by SDS-PAGE and Coomassie blue staining using 3µg of ErbB2, active.

Tel: 1-631-559-9269 1-516-512-3133

Email: info@creative-biomart.com Fax: 1-631-938-8127

45-1 Ramsey Road, Shirley, NY 11967, USA