

Recombinant Human ERBB2 protein(Domain IV), His-Avi-tagged

Cat. No. ERBB2-823H **Lot. No.** (See product label)

SPECIFICATION

Product Overview	Human ErbB2/Her2 Protein is expressed from mammalian with a His and Avi tag at the C-terminal. It contains Pro489-Cys630 (Domain IV).
Species	Human
Source	HEK293
ProteinLength	It contains Pro489-Cys630 (Domain IV).
Description	The epidermal growth factor receptor (EGFR) is overexpressed in a variety of human epithelial tumors, often as a consequence of gene amplification. Tumors with EGFR gene amplification frequently contain EGFR gene rearrangements, with the most common extracellular domain mutation being EGFRvIII. This mutation leads to a deletion of exons 2-7 of the EGFR gene and renders the mutant receptor incapable of binding any known ligand.
Form	Supplied as 0.22um filtered solution in PBS (pH 7.4).
Molecular Mass	The Protein has a calculated MW of 18.5kDa .As a result of glycosylation, the protein migrates as 28-40kDa based on Bis-Tris PAGE.
Endotoxin	Less than 0.05EU per ug by the LAL method.
Purity	> 95% as determined by Bis-Tris PAGE; > 95% as determined by HPLC

 Tel: 1-631-559-9269 1-516-512-3133

 Email: info@creative-biomart.com  Fax: 1-631-938-8127

 45-1 Ramsey Road, Shirley, NY 11967, USA

Storage	The product should be stored at -70°C. Please do not repeated freeze-thaw cycles.
Reconstitution	It is recommended that sterile water be added to the vial to prepare a stock solution of 0.2 ug/ul. Centrifuge the vial at 4°C before opening to recover the entire contents.
GENE INFORMATION	
Gene Name	ERBB2 v-erb-b2 erythroblastic leukemia viral oncogene homolog 2, neuro/glioblastoma derived oncogene homolog (avian) [Homo sapiens]
Official Symbol	ERBB2
Synonyms	D340 antigen; CD340; c-erb B2/neu protein; EC 2.7.10; EGFR2; ErbB2; HER2; HER-2; HER2EC 2.7.10.1; herstatin; Metastatic lymph node gene 19 protein; MLN 19; MLN19; Neu Oncogene; NEUHER-2/neu; neuroblastoma/glioblastoma derived oncogene homolog; NGL; NGLTKR1; p185erbB2; Proto-oncogene c-ErbB-2; Proto-oncogene Neu; receptor tyrosine-protein kinase erbB-2; TKR1; Tyrosine kinase-type cell surface receptor HER2; v-erb-b2 avian erythroblastic leukemia viral oncogene homolog 2(neuro/glioblastoma derived oncogene homolog); v-erb-b2 erythroblastic leukemia viral oncogene homolog 2, neuro/glioblastomaderived oncogene homolog (avian)
Gene ID	2064
mRNA Refseq	NM_001005862
Protein Refseq	NP_001005862
MIM	164870
UniProt ID	P04626

 Tel: 1-631-559-9269 1-516-512-3133

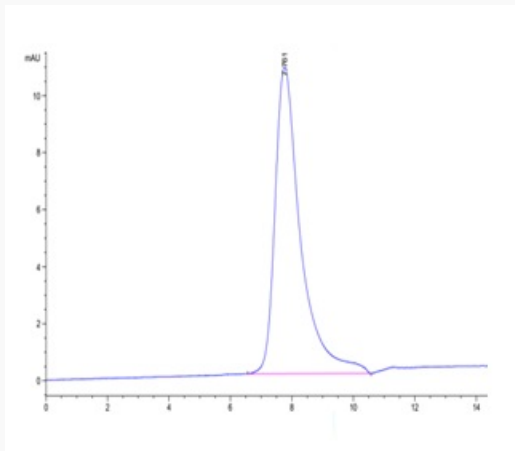
 Email: info@creative-biomart.com  Fax: 1-631-938-8127

 45-1 Ramsey Road, Shirley, NY 11967, USA

Tris-Bis PAGE



HPLC data



 Tel: 1-631-559-9269 1-516-512-3133

 Email: info@creative-biomart.com  Fax: 1-631-938-8127

 45-1 Ramsey Road, Shirley, NY 11967, USA