

## Active Recombinant Human ERBB2, His-tagged

Cat. No. ERBB2-922H Lot. No. (See product label)

### SPECIFICATION

<b>Product Overview</b>	Active Recombinant Human ERBB2 Protein(P04626-1)(Thr23-Thr652) is expressed from HEK293 with His tag at the C-terminus.
<b>Species</b>	Human
<b>Source</b>	HEK293
<b>ProteinLength</b>	23-652 aa
<b>Form</b>	Lyophilized from 0.22 µm filtered solution in PBS (pH 7.4).
<b>Bio-activity</b>	Immobilized Human Her2, His Tag at 0.5µg/ml (100µl/well) on the plate. Dose response curve for Anti-HER2 Antibody, hFc Tag with the EC50 of 5.6ng/ml determined by ELISA.
<b>Molecular Mass</b>	The protein has a predicted MW of 70.96 kDa. Due to glycosylation, the protein migrates to 80-110 kDa based on Bis-Tris PAGE result.
<b>Endotoxin</b>	Less than 1 EU per µg by the LAL method.
<b>Purity</b>	> 95% as determined by Bis-Tris PAGE > 95% as determined by HPLC
<b>Storage</b>	-20 to -80°C for 12 months as supplied from date of receipt. -80°C for 3 months after reconstitution. Recommend to aliquot the protein into smaller quantities for optimal storage. Please minimize freeze-thaw cycles.

 Tel: 1-631-559-9269 1-516-512-3133

 Email: [info@creative-biomart.com](mailto:info@creative-biomart.com)  Fax: 1-631-938-8127

 45-1 Ramsey Road, Shirley, NY 11967, USA

**Reconstitution**      Dissolve the lyophilized protein in distilled water.

## GENE INFORMATION

**Gene Name**      ERBB2 v-erb-b2 erythroblastic leukemia viral oncogene homolog 2, neuro/glioblastoma derived oncogene homolog (avian) [ Homo sapiens ]

**Official Symbol**      ERBB2

**Synonyms**      ERBB2; v-erb-b2 erythroblastic leukemia viral oncogene homolog 2, neuro/glioblastoma derived oncogene homolog (avian); NGL, v erb b2 avian erythroblastic leukemia viral oncogene homolog 2 (neuro/glioblastoma derived oncogene homolog); receptor tyrosine-protein kinase erbB-2; CD340; HER 2; HER2; NEU; herstatin; p185erbB2; proto-oncogene Neu; c-erb B2/neu protein; proto-oncogene c-ErbB-2; metastatic lymph node gene 19 protein; tyrosine kinase-type cell surface receptor HER2; neuroblastoma/glioblastoma derived oncogene homolog; v-erb-b2 avian erythroblastic leukemia viral oncogene homolog 2 (neuro/glioblastoma derived oncogene homolog); NGL; TKR1; HER-2; MLN 19; HER-2/neu;

**Gene ID**      2064

**mRNA Refseq**      NM\_001005862

**Protein Refseq**      NP\_001005862

**MIM**      164870

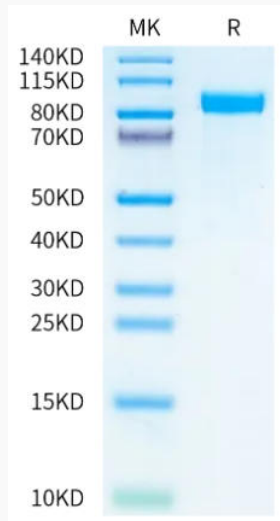
**UniProt ID**      P04626

 Tel: 1-631-559-9269    1-516-512-3133

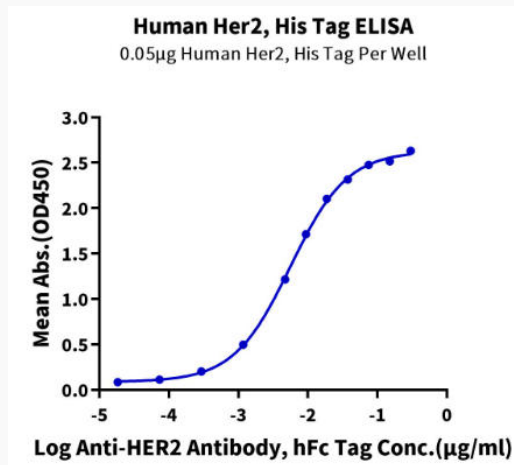
 Email: [info@creative-biomart.com](mailto:info@creative-biomart.com)     Fax: 1-631-938-8127

 45-1 Ramsey Road, Shirley, NY 11967, USA

**Bis-Tris PAGE**



**ELISA Data**



 Tel: 1-631-559-9269 1-516-512-3133

 Email: [info@creative-biomart.com](mailto:info@creative-biomart.com)  Fax: 1-631-938-8127

 45-1 Ramsey Road, Shirley, NY 11967, USA