

Recombinant Human ERBB3 Protein, His-tagged

Cat. No. ERBB3-02H Lot. No. (See product label)

SPECIFICATION

Product Overview	Recombinant Human ERBB3 Protein, fused to His-tag, was expressed in Insect cell.
Species	Human
Source	Insect Cells
Description	<p>This gene encodes a member of the epidermal growth factor receptor (EGFR) family of receptor tyrosine kinases. This membrane-bound protein has a neuregulin binding domain but not an active kinase domain. It therefore can bind this ligand but not convey the signal into the cell through protein phosphorylation. However, it does form heterodimers with other EGF receptor family members which do have kinase activity. Heterodimerization leads to the activation of pathways which lead to cell proliferation or differentiation. Amplification of this gene and/or overexpression of its protein have been reported in numerous cancers, including prostate, bladder, and breast tumors. Alternate transcriptional splice variants encoding different isoforms have been characterized. One isoform lacks the intermembrane region and is secreted outside the cell. This form acts to modulate the activity of the membrane-bound form. Additional splice variants have also been reported, but they have not been thoroughly characterized.</p>
Molecular Mass	42.5 kDa
AA Sequence	MLLVNQSHQGFNKEHTSKMVSAIVLYVLLAAAAHSAFAHHHHHHGSESIEPLDPSEKANKVLARIFKETELRKLKVLGSGVFGTVHKGWVWPEGESIKIPVCIKVIEDKSGRQSFQA

 Tel: 1-631-559-9269 1-516-512-3133

 Email: info@creative-biomart.com  Fax: 1-631-938-8127

 45-1 Ramsey Road, Shirley, NY 11967, USA

VTDHMLAIGSLDHAHIVRLLGLCPGSSLQLVTQYLPLGSLLDHVRQHRGALGPQLL
 NWGVQIAKGMYYLEEHGMVHRNLAARNVLLKSPSQVQVADFGVADLLPPDDKQLL
 YSEAKTPIKWMALESIHFQKYTHQSDVWSYGVTWELMTFGAEPYAGLRLAEVPDL
 LEKGGRLAQPQICTIDVYMMVKCWMIDENIRPTFKELANEFTRMARDPPRYLVIKR
 ESGPGIAPGPEPHGLTNKKLEEVELEPELDDLDDLEAEED

GENE INFORMATION

Gene Name [ERBB3 erb-b2 receptor tyrosine kinase 3 \[Homo sapiens \(human\) \]](#)

Official Symbol [ERBB3](#)

Synonyms [HER3](#); [FERLK](#); [LCCS2](#); [VSCN1](#); [ErbB-3](#); [c-erbB3](#); [erbB3-S](#); [MDA-BF-1](#); [c-erbB-3](#); [p180-ErbB3](#); [p45-sErbB3](#); [p85-sErbB3](#)

Gene ID [2065](#)

mRNA Refseq [NM_001982.4](#)

Protein Refseq [NP_001973.2](#)

MIM [190151](#)

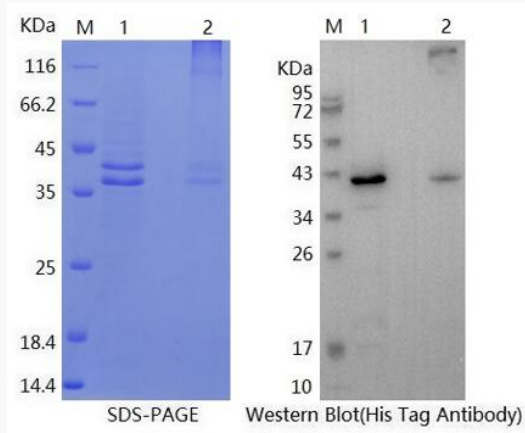
UniProt ID [P21860](#)

 Tel: 1-631-559-9269 1-516-512-3133

 Email: info@creative-biomart.com  Fax: 1-631-938-8127

 45-1 Ramsey Road, Shirley, NY 11967, USA

SDS-PAGE



SDS-PAGE and WB analysis of protein from refolding from intracellular after scale-up.

 Tel: 1-631-559-9269 1-516-512-3133

 Email: info@creative-biomart.com  Fax: 1-631-938-8127

 45-1 Ramsey Road, Shirley, NY 11967, USA