

Recombinant Human ERBB3 Protein (E928G), His tagged

Cat. No. ERBB3-02HM Lot. No. (See product label)

SPECIFICATION

Product Overview	Recombinant Human ERBB3 Protein (E928G) with His tag was expressed in Insect cell.
Species	Human
Source	Insect Cells
Description	<p>This gene encodes a member of the epidermal growth factor receptor (EGFR) family of receptor tyrosine kinases. This membrane-bound protein has a neuregulin binding domain but not an active kinase domain. It therefore can bind this ligand but not convey the signal into the cell through protein phosphorylation. However, it does form heterodimers with other EGF receptor family members which do have kinase activity. Heterodimerization leads to the activation of pathways which lead to cell proliferation or differentiation. Amplification of this gene and/or overexpression of its protein have been reported in numerous cancers, including prostate, bladder, and breast tumors. Alternate transcriptional splice variants encoding different isoforms have been characterized. One isoform lacks the intermembrane region and is secreted outside the cell. This form acts to modulate the activity of the membrane-bound form. Additional splice variants have also been reported, but they have not been thoroughly characterized.</p>
Molecular Mass	42.5 kDa
AA Sequence	MLLVNQSHQGFNKEHTSKMVSAIVLYVLLAAAHAHSAFAHHHHHHGSESIEPLDPSEKA

 Tel: 1-631-559-9269 1-516-512-3133

 Email: info@creative-biomart.com  Fax: 1-631-938-8127

 45-1 Ramsey Road, Shirley, NY 11967, USA

NKVLARIFKETELRKLKVLGSGVFGTVHKGVWIPEGESIKIPVCIKVIEDKSGRQSFQA
 VTDHMLAIGSLDHAHIVRLLGLCPGSSLQLVTQYLPLGSLLDHVRQHRGALGPQLLL
 NWGVQIAKGMYYLEEHGMVHRNLAARNVLLKSPSQVQVADFGVADLLPPDDKQLL
 YSEAKTPIKWMALESIHFGKYTHQSDVWSYGVTVWELMTFGAEPYAGLRLAEVPLD
 LEKGGRLAQPQICTIDVYMVMVKCWMIDENIRPTFKELANEFTRMARDPPRYLVIKR
 ESGPGIAPGPEPHGLTNKKLEEVELEPELDLDDLEAEED*

GENE INFORMATION

Gene Name ERBB3 v-erb-b2 erythroblastic leukemia viral oncogene homolog 3 (avian) [Homo sapiens (human)]

Official Symbol ERBB3

Synonyms ERBB3; v-erb-b2 erythroblastic leukemia viral oncogene homolog 3 (avian); LCCS2, lethal congenital contracture syndrome 2; receptor tyrosine-protein kinase erbB-3; HER3; proto-oncogene-like protein c-ErbB-3; tyrosine kinase-type cell surface receptor HER3; LCCS2; ErbB-3; c-erbB3; erbB3-S; MDA-BF-1; c-erbB-3; p180-ErbB3; p45-sErbB3; p85-sErbB3; MGC88033

Gene ID 2065

mRNA Refseq NM_001005915

Protein Refseq NP_001005915

MIM 190151

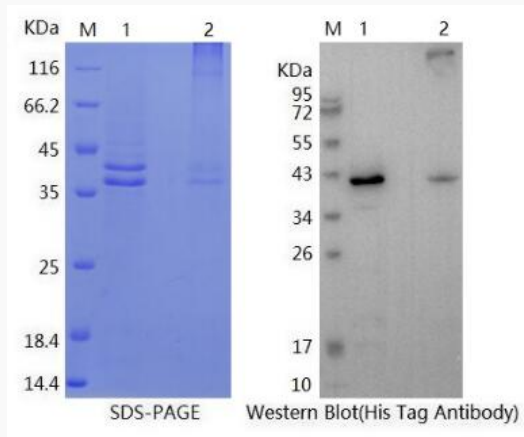
UniProt ID P21860

 Tel: 1-631-559-9269 1-516-512-3133

 Email: info@creative-biomart.com  Fax: 1-631-938-8127

 45-1 Ramsey Road, Shirley, NY 11967, USA

**SDS-PAGE and WB
analysis of protein
from refolding from
intracellular after
scale-up**



M: Protein ladder; 1: Reduced sample; 2: Non-reduced sample

 Tel: 1-631-559-9269 1-516-512-3133

 Email: info@creative-biomart.com  Fax: 1-631-938-8127

 45-1 Ramsey Road, Shirley, NY 11967, USA